



# Explore Physics By Himanshu

Centre of Excellence | Physical Science

(CSIR-NET JRF, GATE, JEST, BARC, TIFR, IIT JAM, RPSC Asst. Professor)

*Correct answers are highlighted.*

## GS-2021 Screening Test

# Physics

INSTRUCTIONS FOR ALL CANDIDATES APPEARING FOR THE PHYSICS TEST FOR Ph.D. OR Integrated Ph.D.

**PLEASE READ THESE INSTRUCTIONS CAREFULLY BEFORE YOU ATTEMPT THE QUESTIONS**

- You may NOT keep with you any books, papers, mobile phones or any electronic devices which can be used to get/store information. **Use of scientific, non-programmable calculators is permitted.** Calculators which plot graphs are NOT allowed. Multiple-use devices, such as smart phones, etc. CANNOT be used as calculators.
- This test consists of TWO sections.
  - **SECTION A** comprises 25 questions, numbered Q. 1 — Q. 25. These are questions on basic topics.
  - **SECTION B** comprises 15 questions, numbered Q. 1 — Q. 15. These may require somewhat more thought/knowledge.
- ALL questions are Multiple-Choice Type. In each case, ONLY ONE option is correct. Answer them by clicking the radio button next to the relevant option.
- If your calculated answer does not match any of the given options exactly, you may mark the closest one if it is reasonably close.
- The **grading scheme** will be as follows:  
Section A : +3 marks if correct; -1 mark if incorrect; 0 marks if not attempted  
Section B : +5 marks if correct; 0 marks if incorrect or not attempted, i.e. NO negative marks.
- The invigilators will supply you with paper sheets for rough work.
- **Do NOT ask the invigilators for clarifications regarding the questions.** They have been instructed not to respond to any such queries. In case a correction/clarification is deemed necessary, it will be announced in the examination hall.
- You can get a list of **useful physical constants** by clicking on the link **Useful Data**. Make sure to use only these values in answering the questions, especially where the options are numerical.



# Explore Physics By Himanshu

Centre of Excellence | Physical Science

(CSIR-NET JRF, GATE, JEST, BARC, TIFR, IIT JAM, RPSC Asst. Professor)

LIST OF USEFUL CONSTANTS RELEVANT FOR THE PHYSICS TEST FOR Ph.D. OR Integrated Ph.D.

When answering the questions please use only these values in your calculations  
unless otherwise instructed

## Physical Constants

| Symbol             | Name/Definition                                           | Value (SI Units)                                                  | Value (Other Units)                         |
|--------------------|-----------------------------------------------------------|-------------------------------------------------------------------|---------------------------------------------|
| $c$                | speed of light in vacuum                                  | $3 \times 10^8 \text{ m s}^{-1}$                                  |                                             |
| $\hbar$            | reduced Planck constant ( $= h/2\pi$ )                    | $1.04 \times 10^{-34} \text{ J s}$                                |                                             |
| $G_N$              | gravitational constant                                    | $6.67 \times 10^{-11} \text{ m}^3 \text{ kg}^{-1} \text{ s}^{-2}$ |                                             |
| $M_\odot$          | solar mass                                                | $1.989 \times 10^{30} \text{ kg}$                                 |                                             |
| $\epsilon_0$       | permittivity of free space                                | $8.85 \times 10^{-12} \text{ F m}^{-1}$                           |                                             |
| $\mu_0$            | permeability of free space                                | $4\pi \times 10^{-7} \text{ N A}^{-2}$                            |                                             |
| $e$                | electron charge (magnitude)                               | $1.6 \times 10^{-19} \text{ C}$                                   |                                             |
| $m_e$              | electron mass                                             | $9.1 \times 10^{-31} \text{ kg}$                                  | $= 0.511 \text{ MeV}/c^2$                   |
| $a_0$              | Bohr radius                                               | $0.51 \text{ \AA}$                                                |                                             |
|                    | ionisation potential of H atom                            | $13.6 \text{ eV}$                                                 |                                             |
| $N_A$              | Avogadro number                                           | $6.023 \times 10^{23} \text{ mol}^{-1}$                           |                                             |
| $k_B$              | Boltzmann constant                                        | $1.38 \times 10^{-23} \text{ J K}^{-1}$                           | $= 8.6173 \times 10^{-5} \text{ eV K}^{-1}$ |
| $R = N_A k_B$      | gas constant                                              | $8.31 \text{ J mol}^{-1} \text{ K}^{-1}$                          |                                             |
| $\gamma = C_p/C_v$ | ratio of specific heats: monatomic gas                    | 1.67                                                              |                                             |
|                    | diatomic gas                                              | 1.40                                                              |                                             |
| $\sigma$           | Stefan-Boltzmann constant                                 | $5.67 \times 10^{-8} \text{ W m}^{-2} \text{ K}^{-4}$             |                                             |
| $\alpha$           | fine structure constant ( $= e^2/4\pi\epsilon_0\hbar c$ ) | 1/137                                                             |                                             |
| $g$                | acceleration due to gravity                               | $9.8 \text{ m s}^{-2}$                                            |                                             |
| $R_E$              | radius of the Earth                                       | $6.4 \times 10^3 \text{ Km}$                                      |                                             |
| $R_S$              | radius of the Sun                                         | $7 \times 10^5 \text{ Km}$                                        |                                             |
| $m_p$              | proton mass ( $\approx 2000 m_e$ )                        | $1.7 \times 10^{-27} \text{ kg}$                                  | $= 938.2 \text{ MeV}/c^2$                   |
| $m_n$              | neutron mass ( $\approx 2000 m_e$ )                       | $1.7 \times 10^{-27} \text{ kg}$                                  | $= 939.6 \text{ MeV}/c^2$                   |

## Conversion Factors

| Symbol         | Name/Definition                                 | Value (SI Units)                                  | Value (Other Units)       |
|----------------|-------------------------------------------------|---------------------------------------------------|---------------------------|
| $\hbar c$      | conversion constant                             |                                                   | 197.3 MeV fm              |
| 1 A.U.         | mean distance of Earth from Sun                 | $1.5 \times 10^9 \text{ km}$                      |                           |
| 1 a.m.u.       | atomic mass unit                                | $1.6 \times 10^{-27} \text{ kg}$                  | $= 931.5 \text{ MeV}/c^2$ |
| 1 eV           | electron Volt                                   | $1.6 \times 10^{-19} \text{ J}$                   |                           |
| 1 T            | Tesla                                           | $10^4 \text{ gauss}$                              |                           |
| 1 bar          | mean atmospheric pressure at $0^\circ \text{C}$ | $1.01 \times 10^5 \text{ Pa} (= \text{N m}^{-2})$ |                           |
| 1 $\text{\AA}$ | Ångstrom unit                                   | $10^{-8} \text{ cm}$                              |                           |
| 1 kWh          | Commercial energy unit                          | $3.6 \times 10^6 \text{ J}$                       |                           |

**B-33, 2nd floor, Gopalpura Mod, Jaipur (Raj.) 8769 083 960**

E. [explorephysicsbyhimanshu@gmail.com](mailto:explorephysicsbyhimanshu@gmail.com) | W. [www.explorephysicsbyhimanshu.com](http://www.explorephysicsbyhimanshu.com)



# Explore Physics By Himanshu

Centre of Excellence | Physical Science

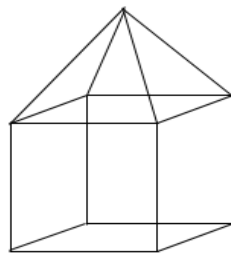
(CSIR-NET JRF, GATE, JEST, BARC, TIFR, IIT JAM, RPSC Asst. Professor)

## Section A

(for both Integrated M.Sc.--Ph.D. and Ph.D. candidates)

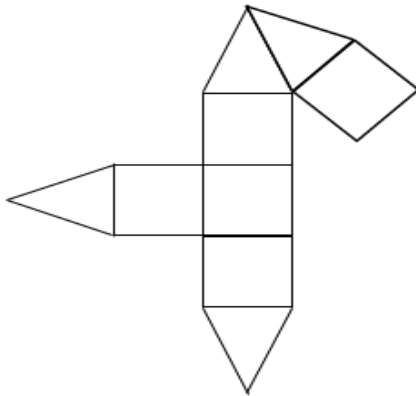
This Section consists of 25 questions. All are of multiple-choice type. Mark only one option on the online interface provided to you. If more than one option is marked, it will be assumed that the question has not been attempted. A correct answer will get +3 marks, an incorrect answer will get -1 mark.

1. A 3-dimensional view of a polygon, whose faces are either squares or isosceles triangles, is sketched below.

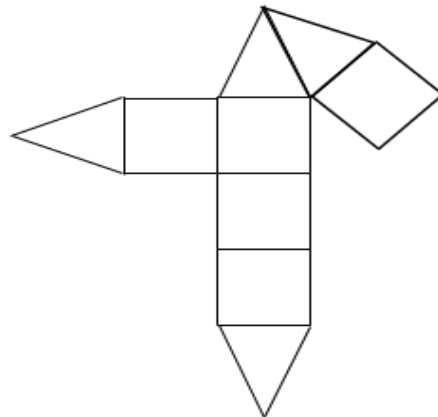


Which of the following 2-dimensional figures represents it after flattening?

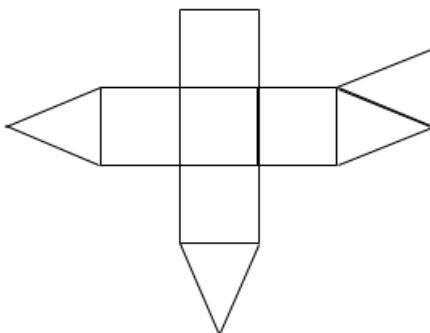
(a)



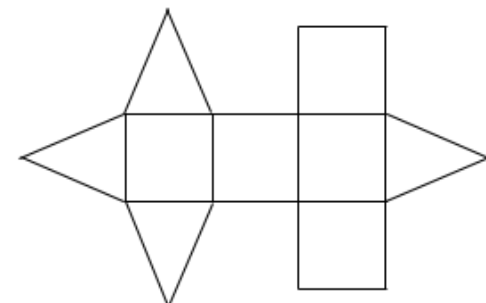
(c)



(b)



(d)







# Explore Physics By Himanshu

Centre of Excellence | Physical Science

(CSIR-NET JRF, GATE, JEST, BARC, TIFR, IIT JAM, RPSC Asst. Professor)

2. The integral

$$I = \int_{1/2}^{3/4} dx \exp\left\{-\exp\left(\frac{1}{x}\right)\right\}$$

evaluates to  $I =$

- (a) 0.00215
- (b)  $\exp\sqrt{2}$
- (c) 1.762633
- (d)  $-\exp(-1)$

3. A unitary matrix  $\mathbf{U}$  is expressed in terms of a Hermitian matrix  $\mathbf{H}$ , such that

$$\mathbf{U} = e^{i\pi\mathbf{H}/2}$$

If the matrix  $H$  is given by

$$\mathbf{H} = \sqrt{3} \begin{pmatrix} 1/3 & 0 & \sqrt{2}/3 \\ 0 & 1/\sqrt{3} & 0 \\ \sqrt{2}/3 & 0 & -1/3 \end{pmatrix}$$

then  $\mathbf{U}$  will have the form

- (a)  $\begin{pmatrix} i/\sqrt{3} & 0 & i\sqrt{2}/\sqrt{3} \\ 0 & i & 0 \\ i\sqrt{2}/\sqrt{3} & 0 & -i/\sqrt{3} \end{pmatrix}$
- (b)  $\begin{pmatrix} \sqrt{3} & 0 & \sqrt{6} \\ 0 & 3\sqrt{3} & 0 \\ \sqrt{6} & 0 & -\sqrt{3} \end{pmatrix}$
- (c)  $\begin{pmatrix} i\sqrt{3} & 1/\sqrt{3} & \sqrt{2}/\sqrt{3} \\ 1/\sqrt{3} & i & 1/\sqrt{3} \\ \sqrt{2}/\sqrt{3} & 1/\sqrt{3} & i\sqrt{3} \end{pmatrix}$
- (d)  $\begin{pmatrix} 3\sqrt{3}i & \sqrt{3} & 3/2 \\ \sqrt{3} & i & 0 \\ \sqrt{2}/\sqrt{3} & 0 & 3\sqrt{3}i \end{pmatrix}$



# Explore Physics By Himanshu

Centre of Excellence | Physical Science

(CSIR-NET JRF, GATE, JEST, BARC, TIFR, IIT JAM, RPSC Asst. Professor)

4. In a country, the fraction of population infected with Covid-19 is 0.2. It is also known that out of the people who are infected with Covid-19, only a fraction 0.3 show symptoms of the disease, while the rest do not show any symptoms.

If you randomly select a citizen of this country, the probability that this person will **NOT** show symptoms of Covid-19 is

- (a) 0.94
- (b) 0.56
- (c) 0.86
- (d) 0.80
5. In a futuristic scenario, an inter-planetary meeting is arranged on planet Pegasus XIV, which is 10 light years away from the Earth. The team of representatives from Earth would like to take a spaceship to Pegasus XIV that has a one-hour flight time according to the watches of the passengers. The Team Leader from Earth would like to leave from the Earth half-an-hour later, but taking a spaceship that has a half-an-hour flight time according to the watches of the passengers. If the time taken for acceleration may be neglected for both spaceships, which of the following statements is correct ?
- (a) The Team Leader would reach Pegasus XIV before the committee members.
- (b) The Team Leader would reach Pegasus XIV at the same time as the committee members.
- (c) The Team Leader would reach Pegasus XIV after the committee members.
- (d) The situation described in the problem is not possible by the laws of physics.



# Explore Physics By Himanshu

Centre of Excellence | Physical Science

(CSIR-NET JRF, GATE, JEST, BARC, TIFR, IIT JAM, RPSC Asst. Professor)

6. A planet is moving around a star of mass  $M_0$  in a circular orbit of radius  $R$ . The star starts to lose its mass very slowly (adiabatically), and after some time, it reaches a mass  $M$  ( $M < M_0$ ). If the motion of the planet is still circular at that time, the radius of its orbit will become

(a)  $R \left( \frac{M_0}{M} \right)^2$

(b)  $R \left( \frac{M}{M_0} \right)^2$

(c)  $R \left( \frac{M_0}{M} \right)^{1/2}$

(d)  $R \left( \frac{M}{M_0} \right)$

7. A star moves in an orbit under the influence of massive but invisible object with the effective one-dimensional potential

$$V(r) = -\frac{1}{r} + \frac{L^2}{2r^2} - \frac{L^2}{r^3}$$

where  $L$  is the angular momentum of the star. There would be two possible circular orbits of the star if

(a)  $L^2 > 12$

(b)  $L^2 > 6$

(c)  $L^2 > 3$

(d)  $L^2 > 9$



# Explore Physics By Himanshu

Centre of Excellence | Physical Science

(CSIR-NET JRF, GATE, JEST, BARC, TIFR, IIT JAM, RPSC Asst. Professor)

8. A particle of mass  $m$  moves in a plane  $(r, \theta)$  under the influence of a force

$$\vec{F} = \frac{mk}{r^3} (x\hat{r} + y\hat{\theta})$$

where  $x = r \cos \theta$  and  $y = r \sin \theta$ , while  $k$  is a constant. The Lagrangian for this system is

(a)  $L = \frac{1}{2}m \left( \dot{r}^2 + r^2\dot{\theta}^2 - \frac{kx}{r^2} \right)$

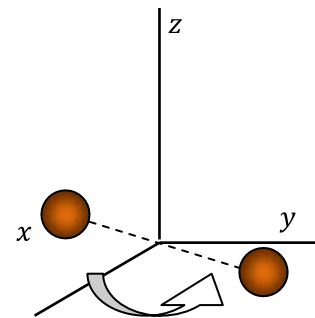
(b)  $L = \frac{1}{2}m \left( \dot{x}^2 + \dot{y}^2 - \frac{ky}{r^2} \right)$

(c)  $L = \frac{1}{2}m \left( \frac{\dot{r}^2}{r} + r\dot{\theta}^2 - \frac{kxy}{r} \right)$

(d)  $L = \frac{1}{2}m \left( \dot{x}^2 + \dot{y}^2 + \frac{kx}{r^2} \right)$

9. Consider a diatomic molecule of oxygen which is rotating in the  $xy$ -plane about the  $z$  axis. The  $z$  axis passes through the centre of the molecule and is perpendicular to its length. At room temperature, the average separation between the two oxygen atoms is  $1.21 \times 10^{-10}$  m (the atoms are treated as point masses). The molar mass of oxygen is 16 gm/mol.

If the angular velocity of the molecule about the  $z$  axis is  $2 \times 10^{12}$  rad/s, its rotational kinetic energy will be closest to



(a)  $3.89 \times 10^{-22}$  Joule

(b)  $7.78 \times 10^{-22}$  Joule

(c)  $15.56 \times 10^{-22}$  Joule

(d)  $1.95 \times 10^{-22}$  Joule



# Explore Physics By Himanshu

Centre of Excellence | Physical Science

(CSIR-NET JRF, GATE, JEST, BARC, TIFR, IIT JAM, RPSC Asst. Professor)

10. A hydrogen atom in its ground state collides with an electron of energy 13.377 eV, absorbs most of the energy of the electron, and goes into an excited state. The maximum possible fraction

$$f \equiv \frac{R_{\text{final}} - R_{\text{initial}}}{R_{\text{initial}}}$$

by which its radius  $R$  would increase will be

- (a)  $f = 0.63$
- (b)  $f = 0.48$
- (c)  $f = 0.60$
- (d)  $f = 0.07$
11. What are the energy eigenvalues for relative motion in one-dimension of a two-body simple quantum harmonic oscillator (each body having mass  $m$ ) with the following Hamiltonian?

$$H = \frac{p_1^2}{2m} + \frac{p_2^2}{2m} + \frac{1}{2}m\omega^2(x_1 - x_2)^2$$

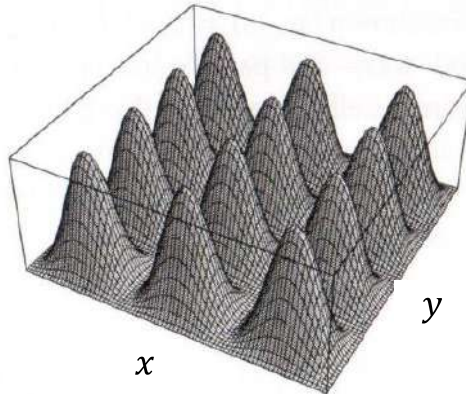
- (a)  $\sqrt{2} \left(n + \frac{1}{2}\right) \hbar\omega$
- (b)  $\left(n + \frac{1}{2}\right) \hbar\omega$
- (c)  $\frac{1}{\sqrt{2}} \left(n + \frac{1}{2}\right) \hbar\omega$
- (d)  $\sqrt{\frac{3}{2}} \left(n + \frac{1}{2}\right) \hbar\omega$



12. An electron is confined to a two-dimensional square box with the following potential

$$V = \begin{cases} 0 & \text{for } 0 < x < L \text{ and } 0 < y < L, \\ \infty & \text{otherwise} \end{cases}$$

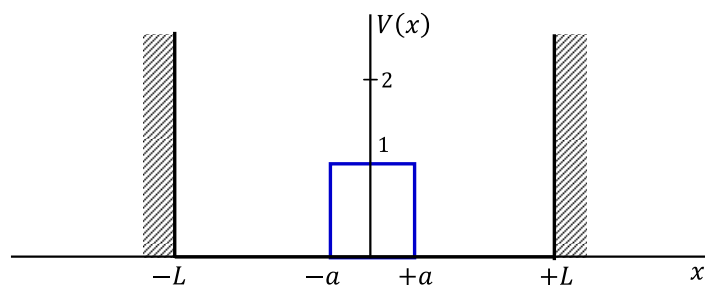
The probability distribution of the electron in one of its eigenstates is shown below



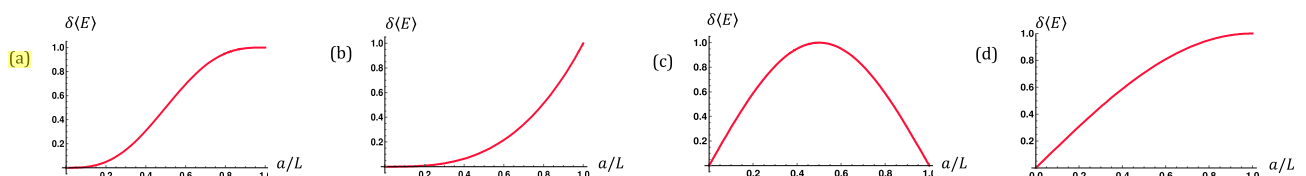
How many total different eigenstates of the electron have the same energy as this state?

- (a) 4                      (b) 2                      (c) 6                      (d) 1

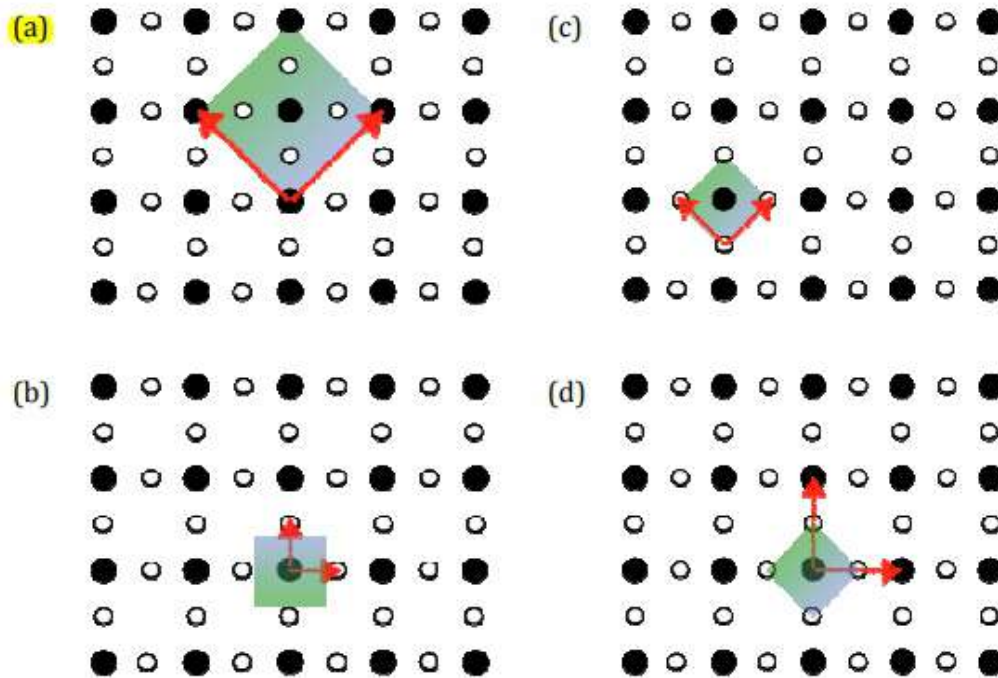
13. A particle of mass  $m$ , confined in a one-dimensional box between  $x = -L$  and  $x = L$ , is in its first excited quantum state. Now, a rectangular potential barrier of height  $V(x) = 1$  and extending from  $x = -a$  to  $x = a$  is suddenly switched on, as shown in the figure below.



Which of the following curves most closely represents the resulting change in average energy  $\delta\langle E \rangle$  of the system when plotted as a function of  $a/L$ , immediately after the barrier is created?



14. The pictures below are intended to denote a two-dimensional lattice with primitive vectors indicated by arrows and with the unit cell shaded. Which of the following pictures is correct?



15. A boiler of volume  $1.7 \text{ m}^3$ , when filled with  $1.0 \text{ kg}$  of steam at  $100^\circ\text{C}$ , has a pressure of  $1.0 \text{ atm}$ . What will be the boiling point of water in this boiler when the pressure is  $2.0 \text{ atm}$ ?

[The latent heat of vaporization of water is  $2250 \times 10^3 \text{ J/kg}$  ;  $1 \text{ atm} = 10^5 \text{ N/m}^2$ ]

- (a)  $128^\circ\text{C}$
- (b)  $118^\circ\text{C}$
- (c)  $78^\circ\text{C}$
- (d)  $88^\circ\text{C}$



# Explore Physics By Himanshu

Centre of Excellence | Physical Science

(CSIR-NET JRF, GATE, JEST, BARC, TIFR, IIT JAM, RPSC Asst. Professor)

---

16. Which of the following is the entropy generated when two identical blocks at temperatures  $2T$  and  $T$  are brought into thermal contact and allowed to reach equilibrium?

[Assume that the heat capacity of each block is  $C$  ]

(a)  $C(2 \ln 3 - 3 \ln 2)$

(b) zero

(c)  $2C \ln \frac{3}{2}$

(d)  $C(2 \ln 2 - 3 \ln 3)$

17. In a Universe with only two spatial dimensions, the total energy radiated by a perfect blackbody across all wavelengths per unit surface area per unit time is proportional to

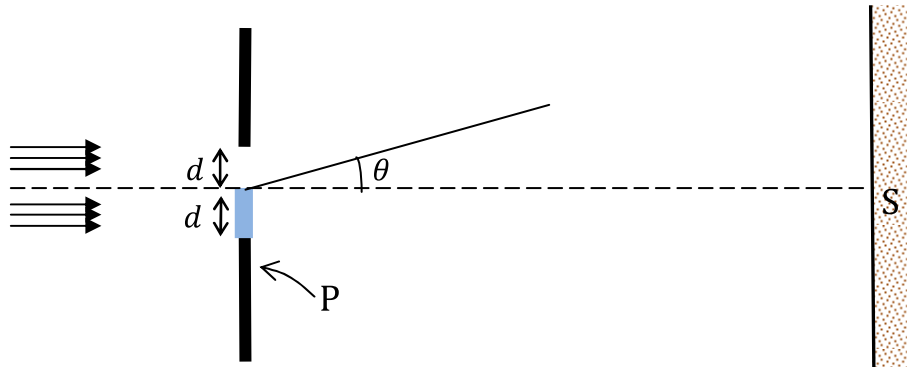
(a)  $T^3$

(b)  $T^4$

(c)  $T^2$

(d)  $T^{3/2}$

18. The lower half of a single slit of width  $d$  is covered with a half-wave plate P as shown in the figure below.



As a result, a beam of coherent monochromatic light of wave vector  $k = 2\pi/\lambda$  incident on the single slit, transmits with an amplitude

$$T(x) = \begin{cases} 1 & \text{for } 0 < x \leq d/2 \\ -1 & \text{for } -d/2 < x \leq 0 \\ 0 & \text{otherwise} \end{cases}$$

and a Fraunhofer diffraction pattern is formed on a screen S placed parallel to the slit.

The intensity at a point on the screen at an angle  $\theta$  measured from the centre of the slit (see figure), is proportional to

(a)  $\frac{1}{\Phi^2} \sin^2 \Phi$  where  $\Phi = \frac{1}{2} kd \sin \theta$

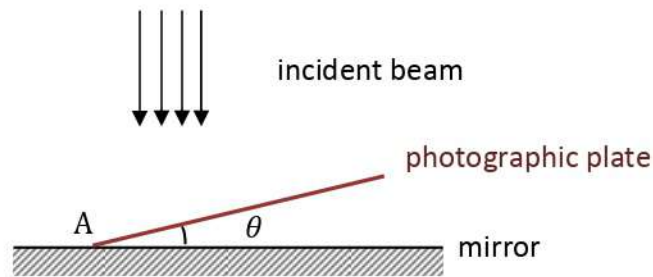
(b)  $\frac{1}{\Phi^2} \sin^4 \Phi$  where  $\Phi = kd \tan \theta$

(c)  $\frac{1}{\Phi} \sin \Phi$  where  $\Phi = kd \cos \theta$

(d)  $\frac{1}{\Phi^2} \cos^2 \Phi$  where  $\Phi = \frac{1}{2} kd \sin \theta$



19. A collimated coherent light beam of wavelength  $\lambda$  is incident normally on an assembly of a mirror and a photographic plate as shown below. The photographic plate is placed at the position A with a small angle  $\theta$  with respect to the mirror surface as shown in the figure below. Assume that the photographic plate is almost transparent to the incident light and has a negligible thickness. After sufficient exposure, the plate is developed.



Which of the following statements is true for the above experimental setup?

- (a) The plate will show dark strips separated by distances  $\frac{\lambda}{2 \sin \theta}$  with the first strip at a distance  $\frac{\lambda}{4 \sin \theta}$  from the point of contact
- (b) The plate will show dark strips separated by distances  $\frac{\lambda}{\sin \theta}$  with the first strip at the point of contact.
- (c) The plate will show dark strips separated by distances  $\frac{\lambda}{\sin \theta}$  with the first strip at a distance  $\frac{\lambda}{2 \sin \theta}$  from the point of contact
- (d) The plate will show dark strips separated by distances  $\frac{\lambda}{2 \sin \theta}$  with the first strip at the point of contact.



# Explore Physics By Himanshu

Centre of Excellence | Physical Science

(CSIR-NET JRF, GATE, JEST, BARC, TIFR, IIT JAM, RPSC Asst. Professor)

---

20. In an experiment that measures the resistivity  $\rho$  of a substance it was observed that  $\rho$  varies with temperature  $T$  and a parameter  $\Delta$ , as

$$\rho = \rho_0 e^{\Delta/T}$$

where  $\rho_0$  is a constant.

In one measurement, made at  $T = 100$  K and  $\Delta = 50$ , the percentage error in  $\Delta$  is found to be 2% while the percentage error in  $T$  was 3%. What was the approximate percentage error for the resistivity  $\rho$  ?

- (a) 1.8 %
- (b) 3.6 %
- (c) 9 %
- (d) 18 %

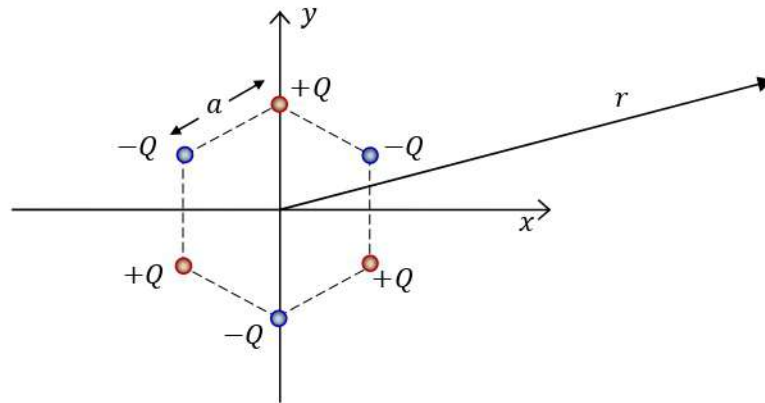


# Explore Physics By Himanshu

Centre of Excellence | Physical Science

(CSIR-NET JRF, GATE, JEST, BARC, TIFR, IIT JAM, RPSC Asst. Professor)

21. Consider 6 charges fixed at the vertices of a regular hexagon of side  $a$ , as shown in the figure below.



The behaviour of the electrostatic potential at distance  $r \rightarrow \infty$  in the  $xy$  plane is proportional to

- (a)  $1/r^4$
- (b)  $1/r^5$
- (c)  $1/r^3$
- (d)  $1/r^2$

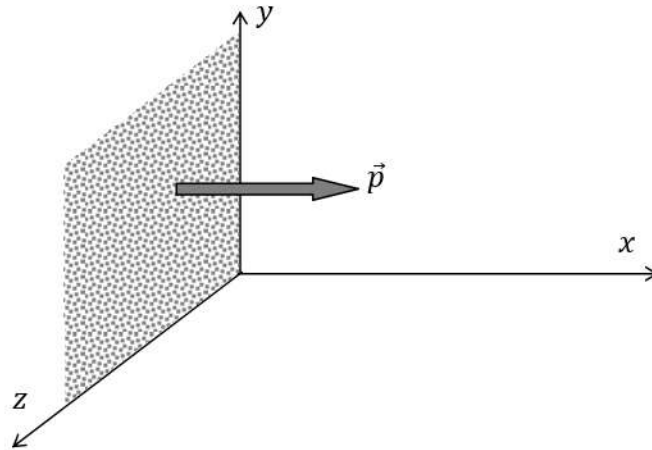


# Explore Physics By Himanshu

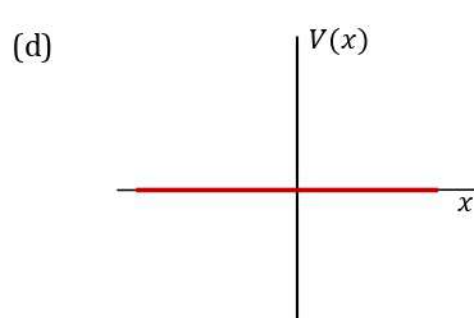
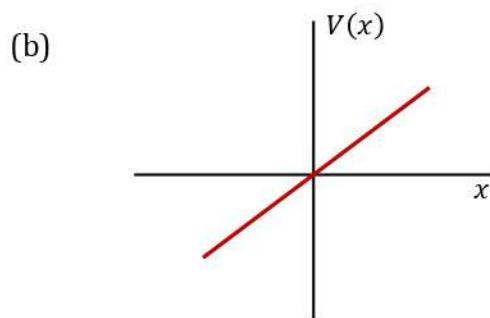
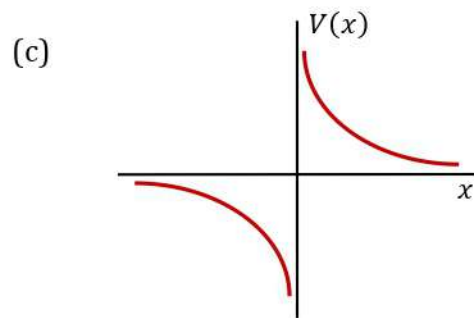
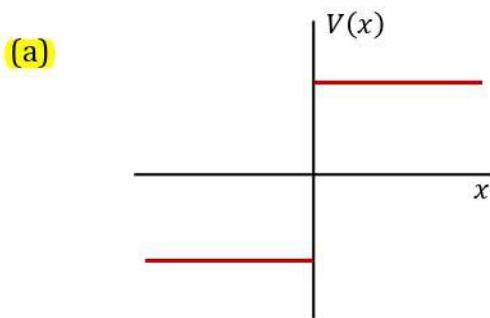
Centre of Excellence | Physical Science

(CSIR-NET JRF, GATE, JEST, BARC, TIFR, IIT JAM, RPSC Asst. Professor)

22. Consider an infinite uniform layer of point-like dipoles, placed in the  $y - z$  plane, with a constant dipole strength  $\vec{p} = p \hat{x}$  per unit area, as shown in figure below.



Which graph best represents the variation of potential along the  $x$  direction?





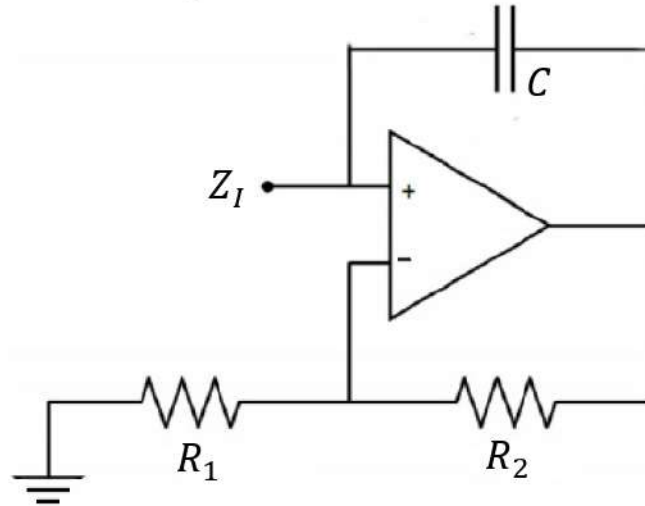


# Explore Physics By Himanshu

Centre of Excellence | Physical Science

(CSIR-NET JRF, GATE, JEST, BARC, TIFR, IIT JAM, RPSC Asst. Professor)

23. An operational amplifier is configured as shown in the figure below. For an AC input this circuit behaves effectively as



- (a) a capacitor with a negative capacitance.
- (b) an inductor with a negative inductance.
- (c) a resistor with a negative resistance.
- (d) an inductor with a positive inductance



# Explore Physics By Himanshu

Centre of Excellence | Physical Science

(CSIR-NET JRF, GATE, JEST, BARC, TIFR, IIT JAM, RPSC Asst. Professor)

---

24. A three variable (A, B, C) truth table has a high output for the input conditions 000, 010, 100, and 110 and low otherwise. This effectively means the circuit following this truth table is the equivalent of

(a)  $\bar{C}$

(b)  $A + \bar{A}$

(c)  $A + B$

(d)  $\bar{C}(A + B)$

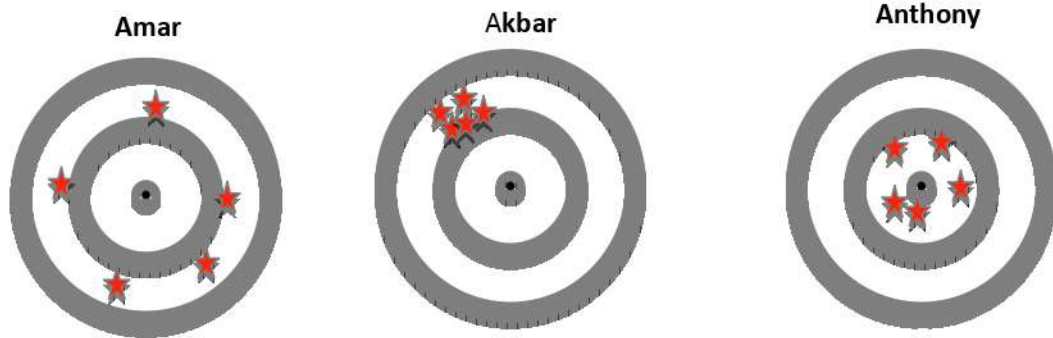


# Explore Physics By Himanshu

Centre of Excellence | Physical Science

(CSIR-NET JRF, GATE, JEST, BARC, TIFR, IIT JAM, RPSC Asst. Professor)

25. In an archery contest, the aim is to shoot arrows at the center of a board. Three archers, Amar, Akbar and Anthony each shot 5 arrows at the board. The locations of their arrow hits are shown in the figures with red stars. Which of the following statements are true?



- (a) Akbar has more precision than Anthony
- (b) Amar has more precision than Akbar
- (c) Akbar has more accuracy than Anthony
- (d) Amar has more accuracy than Anthony



# Explore Physics By Himanshu

Centre of Excellence | Physical Science

(CSIR-NET JRF, GATE, JEST, BARC, TIFR, IIT JAM, RPSC Asst. Professor)

## Section B

(only for Integrated M.Sc.-Ph.D. candidates)

This Section consists of 15 questions. All are of multiple-choice type. Mark only one option on the online interface provided to you. If more than one option is marked, it will be assumed that the question has not been attempted. A correct answer will get +5 marks, an incorrect answer will get 0 mark.

26. A differentiable function  $f(x)$  obeys

$$x \int_0^x \frac{f(y)}{y^2} dy = f(x)$$

If  $f(1) = 1$ , it follows that  $f(2) =$

(a) 4

(b)  $3/4$

(c) 1

(d) 6





# Explore Physics By Himanshu

Centre of Excellence | Physical Science

(CSIR-NET JRF, GATE, JEST, BARC, TIFR, IIT JAM, RPSC Asst. Professor)

---

27. If  $y(x)$  satisfies the following differential equation

$$x \frac{dy}{dx} = \cot y - \operatorname{cosec} y \cos x$$

and we have

$$\lim_{x \rightarrow 0} y(x) = 0$$

then  $y(\pi/2) =$

(a)  $-\cos^{-1}(2/\pi - 2)$

(b)  $\sin^{-1}(2/\pi)$

(c)  $\pi/2$

(d) 0



# Explore Physics By Himanshu

Centre of Excellence | Physical Science

(CSIR-NET JRF, GATE, JEST, BARC, TIFR, IIT JAM, RPSC Asst. Professor)

28. A body is dropped from rest at a height  $h$  above the surface of the Earth at a latitude  $\lambda_N$  in the northern hemisphere. If the angular velocity of rotation of the Earth is  $\omega$ , the lateral displacement of the body at its point of impact on the Earth's surface will be

(a)  $\left(\frac{8h^3\omega^2}{9g}\right)^{1/2} \cos \lambda_N$

(b)  $\left(\frac{8h^3\omega^2}{9g}\right)^{1/2} \sin \lambda_N$

(c)  $\left(\frac{2h^3\omega^2}{9g}\right)^{1/2} \cos \lambda_N$

(d)  $\left(\frac{2h^3\omega^2}{9g}\right)^{1/2} \sin \lambda_N$

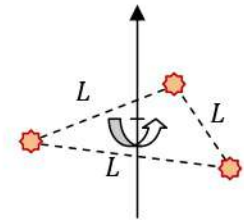


# Explore Physics By Himanshu

Centre of Excellence | Physical Science

(CSIR-NET JRF, GATE, JEST, BARC, TIFR, IIT JAM, RPSC Asst. Professor)

29. Three stars, each of mass  $M$ , are rotating under gravity around a fixed common axis such that they are always at the vertices of an equilateral triangle of side  $L$  (see figure).



The time period of rotation of this triple star system is

(a)  $\frac{2\pi L^{3/2}}{\sqrt{3G_N M}}$

(b)  $\frac{2\pi L^{3/2}}{3\sqrt{G_N M}}$

(c)  $\frac{\pi L^{3/2}}{\sqrt{3G_N M}}$

(d)  $\frac{\pi L^{3/2}}{3\sqrt{G_N M}}$

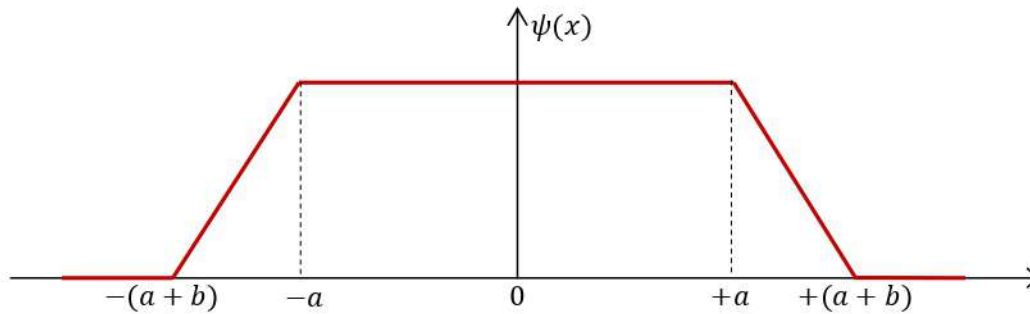


# Explore Physics By Himanshu

Centre of Excellence | Physical Science

(CSIR-NET JRF, GATE, JEST, BARC, TIFR, IIT JAM, RPSC Asst. Professor)

30. The wave function of a one-dimensional particle of mass  $m$  is shown below. The average kinetic energy of the particle can be written as



- (a)  $\frac{3\hbar^2}{2mb(3a+b)}$
- (b) 0
- (c)  $\frac{\hbar^2}{2mb^2}$
- (d)  $\frac{\hbar^2}{2mb(a+b)}$



# Explore Physics By Himanshu

Centre of Excellence | Physical Science

(CSIR-NET JRF, GATE, JEST, BARC, TIFR, IIT JAM, RPSC Asst. Professor)

31. Suppose a system is in a normalised state  $|\Psi\rangle$  such that

$$|\Psi\rangle = c(|\varphi_0\rangle + e^{i\theta}|\varphi_1\rangle)$$

where  $|\varphi_0\rangle$  and  $|\varphi_1\rangle$  are the first two normalised eigenstates of a one-dimensional simple harmonic oscillator of frequency  $\omega$ , and  $c > 0$  is a real constant.

If the expectation value of the position operator  $\hat{x}$  is given by

$$\langle\Psi|\hat{x}|\Psi\rangle = \frac{1}{2}\sqrt{\frac{\hbar}{m\omega}}$$

the value of  $\theta$  must be

- (a)  $\pi/4$
- (b)  $\pi/2$
- (c)  $3\pi/2$
- (d)  $\pi$





# Explore Physics By Himanshu

Centre of Excellence | Physical Science

(CSIR-NET JRF, GATE, JEST, BARC, TIFR, IIT JAM, RPSC Asst. Professor)

---

32 A very sensitive spring balance with spring constant  $k = 2 \times 10^8 \text{ Nm}^{-1}$  is operating at a temperature of 300 K. The thermal fluctuations can lead to an error in the measurement of mass. If you are trying to measure a mass of 1 mg, the relative error in the measurement is closest to

(a) 0.9 %

(b) 10.0 %

(c) 20.0 %

(d) 0.01 %



# Explore Physics By Himanshu

Centre of Excellence | Physical Science

(CSIR-NET JRF, GATE, JEST, BARC, TIFR, IIT JAM, RPSC Asst. Professor)

33. A pulsed laser beam has photon number density  $n$  in each pulse. The photon number density  $n'$  inside each pulse, when measured from a frame moving in a direction perpendicular to the beam with velocity  $v$  is given by

[Assume the usual notation  $\beta = v/c$ ,  $\gamma = (1 - \beta^2)^{-1/2}$ ]

(a)  $\frac{n}{\gamma}$

(b)  $\gamma(1 - \beta)n$

(c)  $n$

(d)  $\frac{\beta n}{\gamma}$



# Explore Physics By Himanshu

Centre of Excellence | Physical Science

(CSIR-NET JRF, GATE, JEST, BARC, TIFR, IIT JAM, RPSC Asst. Professor)

---

34. A spherical balloon of radius  $R$  is made of a material with surface tension  $\gamma$  and filled with  $N$  particles of an ideal gas. If the outside air pressure is  $P$ , the pressure  $P_b$  inside the balloon is given by

(a)  $P_b = P + 2\gamma/R$

(b)  $P_b = P$

(c)  $P_b = P - 2\gamma/R$

(d)  $P_b = P + 3\gamma/R$



# Explore Physics By Himanshu

Centre of Excellence | Physical Science

(CSIR-NET JRF, GATE, JEST, BARC, TIFR, IIT JAM, RPSC Asst. Professor)

---

35. For a pure germanium semiconductor, cooled in liquid nitrogen, the average density of conduction electrons is about  $n = 10^{12} \text{ cm}^{-3}$ . At this temperature, the electron and hole mobilities are equal and have the common value  $\mu = 5.0 \times 10^3 \text{ cm}^2\text{V}^{-1}\text{s}^{-1}$ .

If a potential of 100 V is applied across opposite faces of a cube of this cooled germanium sample having side 1 cm, the current through the sample can be estimated as

- (a) 160 mA
- (b) 16 mA
- (c) 8 mA
- (d) 80 mA



# Explore Physics By Himanshu

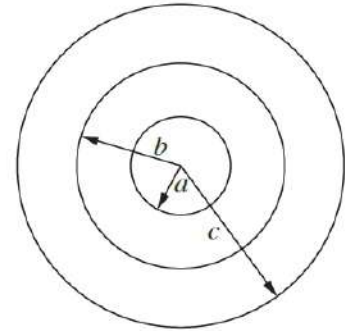
Centre of Excellence | Physical Science

(CSIR-NET JRF, GATE, JEST, BARC, TIFR, IIT JAM, RPSC Asst. Professor)

36. Three concentric spherical metallic shells with radii  $c > b > a$  (see figure) are charged with charges  $e_c$ ,  $e_b$ , and  $e_a$  respectively. The outermost shell (of radius  $c$ ) is at a potential  $V_c^0$ .

Now, the innermost shell (of radius  $a$ ) is grounded, and the potential of the outermost shell becomes  $V_c^g$ .

The difference  $V_c^g - V_c^0$  will be



- (a)  $-\frac{1}{4\pi\epsilon_0} \frac{a}{c} \left( \frac{e_a}{a} + \frac{e_b}{b} + \frac{e_c}{c} \right)$
- (b)  $-\frac{1}{4\pi\epsilon_0} \frac{c}{a} \left( \frac{e_a}{a} + \frac{e_b}{b} + \frac{e_c}{c} \right)$
- (c)  $-\frac{1}{4\pi\epsilon_0} \frac{c}{a} \left( \frac{e_a}{c} + \frac{e_b}{b} + \frac{e_c}{a} \right)$
- (d)  $-\frac{1}{4\pi\epsilon_0} \frac{a}{c} \left( \frac{e_c}{c-a} + \frac{e_b}{b} \right)$



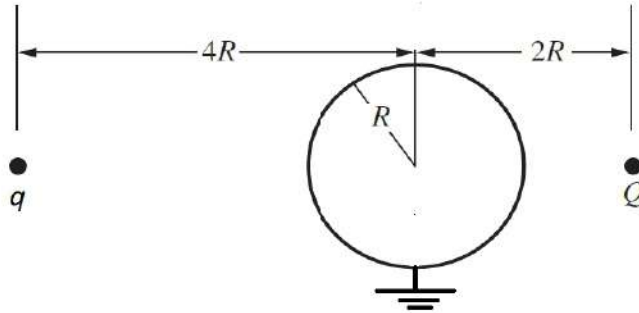


# Explore Physics By Himanshu

Centre of Excellence | Physical Science

(CSIR-NET JRF, GATE, JEST, BARC, TIFR, IIT JAM, RPSC Asst. Professor)

37. Two positive charges  $Q$  and  $q$  are placed on opposite sides of a grounded sphere of radius  $R$  at distances of  $2R$  and  $4R$  respectively, from the centre of the sphere, as shown in the diagram below.



The charge  $q$  feels a force AWAY from the centre of the sphere if

- (a)  $\frac{q}{Q} < \frac{25}{144}$
- (b)  $\frac{q}{Q} < \frac{25}{16}$
- (c)  $\frac{q}{Q} < \frac{25}{36}$
- (d)  $\frac{q}{Q} < \frac{49}{144}$

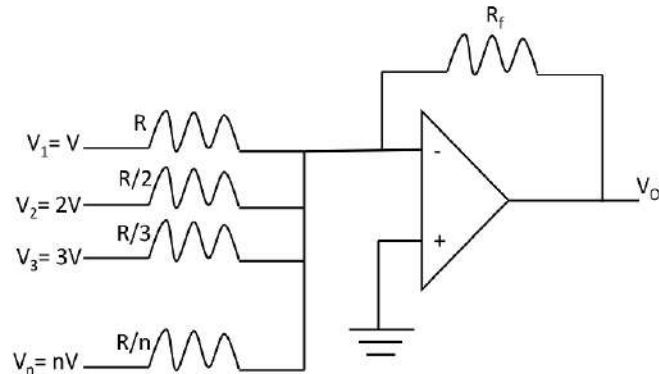


# Explore Physics By Himanshu

Centre of Excellence | Physical Science

(CSIR-NET JRF, GATE, JEST, BARC, TIFR, IIT JAM, RPSC Asst. Professor)

38. Consider the following circuit with an op-amp.



If the output voltage  $V_o$  is measured to be  $V_o = -V$ , then the value of the feedback resistance  $R_f$  must be

(a)  $R_f = \frac{6R}{n(n+1)(2n+1)}$

(b)  $R_f = \frac{3R}{n(n+1)(2n+1)}$

(c)  $R_f = nR$

(d)  $R_f = R/n$



# Explore Physics By Himanshu

Centre of Excellence | Physical Science

(CSIR-NET JRF, GATE, JEST, BARC, TIFR, IIT JAM, RPSC Asst. Professor)

---

39. In an amplifier circuit, an input sine wave of amplitude 5 V gives a sine wave of amplitude 25 V as an output in an open load configuration. On applying a  $20\text{ k}\Omega$  load resistance, the output drops to 10 V. This implies that the output resistance of the amplifier must be

(a)  $30\text{ k}\Omega$

(b)  $20\text{ k}\Omega$

(c)  $10\text{ k}\Omega$

(d)  $2\text{ k}\Omega$



# Explore Physics By Himanshu

Centre of Excellence | Physical Science

(CSIR-NET JRF, GATE, JEST, BARC, TIFR, IIT JAM, RPSC Asst. Professor)

---

40. In an experiment, a counting device is used to record the number of charged particles passing through it. Once this counter records a charged particle, it does not respond for a short interval of time, called the 'dead time' of that counter.

This device is used to count the charged particles emitted by a particular radioactive source. It is found that if the source emits 20,000 counts/second at random intervals, the counter records 19,000 particles per second on an average.

It follows that the counter dead time must be

- (a) 2.63 microseconds
- (b) 2.63 nanoseconds
- (c) 50.0 milliseconds
- (d) 2.63 seconds



# Explore Physics By Himanshu

Centre of Excellence | Physical Science

(CSIR-NET JRF, GATE, JEST, BARC, TIFR, IIT JAM, RPSC Asst. Professor)

## Section B

(only for Ph.D. candidates)

This Section consists of 15 questions. All are of multiple-choice type. Mark only one option on the online interface provided to you. If more than one option is marked, it will be assumed that the question has not been attempted. A correct answer will get +5 marks, an incorrect answer will get 0 mark.

26. How many distinct values can the following function take at a given value of  $z$  ?

$$f(z) = \sqrt{\frac{z^2 - 1}{\sqrt{z}}} (z - i)^{1/3}$$

- (a) 12
- (b) 3
- (c) 4
- (d) 24





# Explore Physics By Himanshu

Centre of Excellence | Physical Science

(CSIR-NET JRF, GATE, JEST, BARC, TIFR, IIT JAM, RPSC Asst. Professor)

27. Given the following  $x - y$  data table

|     |       |       |       |       |       |       |
|-----|-------|-------|-------|-------|-------|-------|
| $x$ | 1.0   | 2.0   | 3.0   | 4.0   | 5.0   | 6.0   |
| $y$ | 0.602 | 0.984 | 1.315 | 1.615 | 1.894 | 2.157 |

which would be the best-fit curve, where  $a$  and  $b$  are constant positive parameters?

(a)  $y = bx^{1/(1+a)}$

(b)  $y = ax - b$

(c)  $y = a + e^{bx}$

(d)  $y = a \log_{10} bx$



# Explore Physics By Himanshu

Centre of Excellence | Physical Science

(CSIR-NET JRF, GATE, JEST, BARC, TIFR, IIT JAM, RPSC Asst. Professor)

28. A particle of mass  $m$ , moving in one dimension  $x$  satisfies the Lagrangian

$$L = \frac{1}{2}m\dot{x}^2 e^{2kx}$$

where  $k$  is a constant.

If  $H$  is the Hamiltonian of the system, the canonical equations of motion are

(a)  $\dot{x} = \frac{p}{m} e^{-2kx}, \dot{p} = -2kH$

(b)  $\dot{x} = \frac{p}{m} e^{2kx}, \dot{p} = -2H$

(c)  $\dot{x} = \frac{p}{m} e^{-2kx}, \dot{p} = -\frac{1}{2}kH$

(d)  $\dot{x} = \frac{p}{m} e^{-2kx}, \dot{p} = -2H$

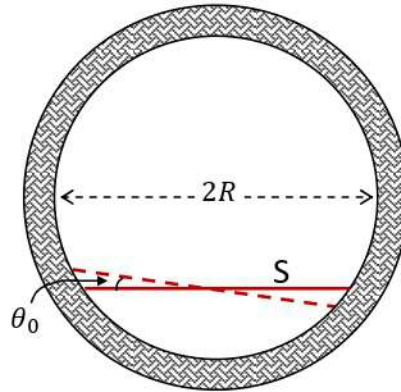


# Explore Physics By Himanshu

Centre of Excellence | Physical Science

(CSIR-NET JRF, GATE, JEST, BARC, TIFR, IIT JAM, RPSC Asst. Professor)

29. A stick  $S$  of uniform density of mass  $M$ , length  $L$ , and negligible width, is constrained to move such that its two ends always stay on the inside of a fixed vertical, circular ring of inner radius  $R$ , as shown below.



If the stick  $S$  is displaced by a small angle  $\theta_0$  from its equilibrium position and then allowed to oscillate freely, the angular frequency  $\omega$  of oscillations will be

[Ignore the friction between the stick and the ring.]

(a)  $\left(\frac{6g}{6R^2 - L^2}\right)^{1/2} \left(R^2 - \frac{L^2}{4}\right)^{1/4}$

(b)  $\left(\frac{4g}{6R^2 - L^2}\right)^{1/2} \left(R^2 - \frac{L^2}{4}\right)^{1/4}$

(c)  $\left(\frac{6g}{3R^2 - L^2}\right)^{1/2} \left(R^2 - \frac{L^2}{4}\right)^{1/4}$

(d)  $\left(\frac{4g}{2R^2 - L^2}\right)^{1/2} \left(R^2 - \frac{L^2}{4}\right)^{1/4}$



# Explore Physics By Himanshu

Centre of Excellence | Physical Science

(CSIR-NET JRF, GATE, JEST, BARC, TIFR, IIT JAM, RPSC Asst. Professor)

30. The Hamiltonian of a spin- $\frac{1}{2}$  particle in a magnetic field  $\vec{B}$  is given by  $H = -\mu\vec{S} \cdot \vec{B}$ , where the components of the spin operator  $\vec{S}$  have eigenvalues  $\pm \hbar/2$ . The spin is pointing in the  $+\hat{x}$  direction, when a magnetic field  $\vec{B} = B\hat{y}$  is turned on. After a time  $t = \pi/2\mu B$ , the spin will be pointing along the direction

(a)  $+\hat{z}$

(b)  $-\hat{z}$

(c)  $-\hat{x}$

(d)  $\hat{x} + \hat{z}$



# Explore Physics By Himanshu

Centre of Excellence | Physical Science

(CSIR-NET JRF, GATE, JEST, BARC, TIFR, IIT JAM, RPSC Asst. Professor)

31. An electron moves in a hydrogen atom potential in a state  $|\Psi\rangle$  that has the wave function

$$\Psi(r, \theta, \varphi) = N R_{21}(r) [ 2i Y_1^{-1}(\theta, \varphi) + (2 + i) Y_1^0(\theta, \varphi) + 3i Y_1^1(\theta, \varphi) ]$$

where  $N$  is a normalization constant,  $R_{nl}(r)$  is the radial wave function and the  $Y_l^m(\theta, \varphi)$  are spherical harmonics.

The expectation value of  $\hat{L}_z$ , i.e. the  $\hat{z}$ -component of the angular momentum operator is

- (a)  $\frac{5}{18} \hbar$
- (b)  $\frac{4}{18} \hbar$
- (c)  $\frac{9}{18} \hbar$
- (d)  $\frac{13}{18} \hbar$



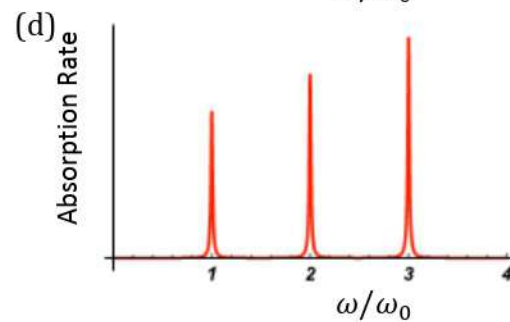
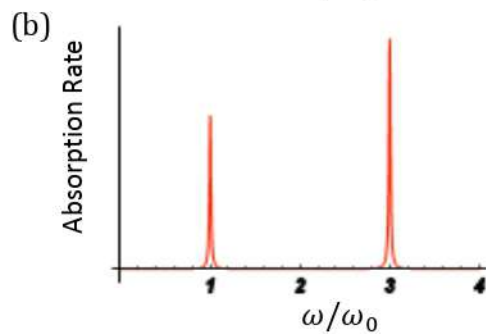
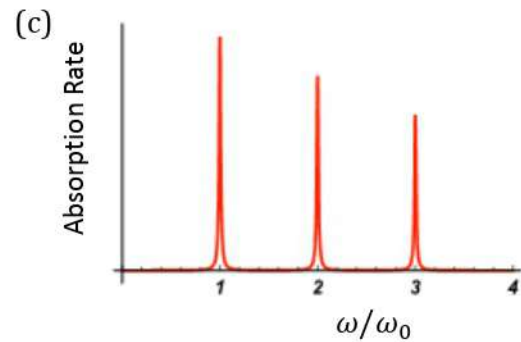
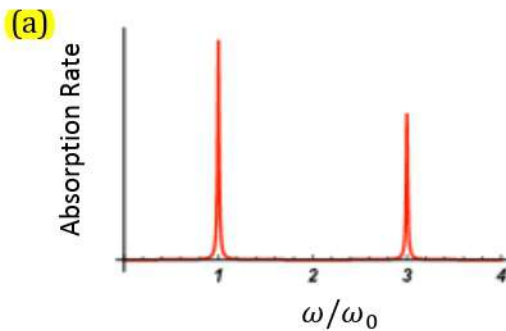


# Explore Physics By Himanshu

Centre of Excellence | Physical Science

(CSIR-NET JRF, GATE, JEST, BARC, TIFR, IIT JAM, RPSC Asst. Professor)

32. Consider a one-dimensional simple harmonic oscillator with frequency  $\omega_0$  in its ground state. An external wave passes through this system, creating a small time-dependent potential of the form  $V(x, t) = Ax^3 \cos \omega t$ , where  $A$  and  $\omega$  are constants. If the absorption rate of the wave is measured as a function of  $\omega$ , which of the following graphs is the likely result of such a measurement?





# Explore Physics By Himanshu

Centre of Excellence | Physical Science

(CSIR-NET JRF, GATE, JEST, BARC, TIFR, IIT JAM, RPSC Asst. Professor)

33. A certain system has one state with energy  $E$ , two states with energy  $2E$ , three states with energy  $3E$  and so on, where  $E > 0$ . The partition function  $Z$  of the system at temperature  $T$  is given by

(a)  $\frac{1}{Z} = 4 \sinh^2 \frac{E}{2T}$

(b)  $\frac{1}{Z} = 2 \cosh^2 \frac{E}{4T}$

(c)  $\frac{1}{Z} = 4 \coth^2 \frac{E}{2T}$

(d)  $\frac{1}{Z} = 2 \tanh^2 \frac{E}{4T}$

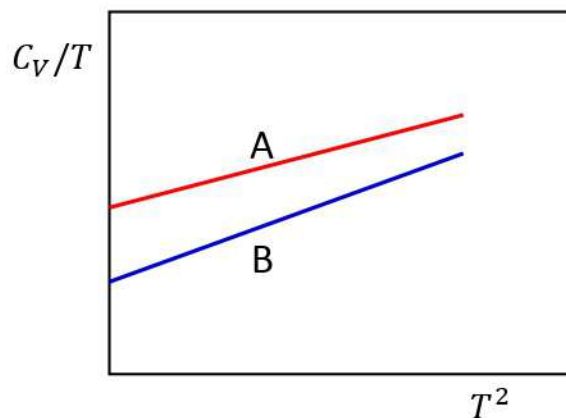


# Explore Physics By Himanshu

Centre of Excellence | Physical Science

(CSIR-NET JRF, GATE, JEST, BARC, TIFR, IIT JAM, RPSC Asst. Professor)

34. The temperature dependence of specific heat of two metals A and B, both with quadratic dispersion relations are shown in the figure below.



Which of the following statements is necessarily false?

- (a) The density of states at Fermi energy of A is smaller than that of B.
- (b) The effective mass of B is larger than that of A.
- (c) The effective mass of A is smaller than that of B.
- (d) The density of states at Fermi energy of B is smaller than that of A.



# Explore Physics By Himanshu

Centre of Excellence | Physical Science

(CSIR-NET JRF, GATE, JEST, BARC, TIFR, IIT JAM, RPSC Asst. Professor)

---

35. The Cartesian components of the electric field  $\vec{E} = \{E_i | i = 1,2,3\}$  in a charge-free region of space are

$$E_i = C_i + \sum_j r_j D_{ji}$$

where  $C_i$  and  $D_{ji}$ 's are constant. The matrix of constants  $D_{ji}$  is

- (a) symmetric and traceless
- (b) symmetric but not traceless
- (c) anti-symmetric and traceless
- (d) anti-symmetric but not traceless



# Explore Physics By Himanshu

Centre of Excellence | Physical Science

(CSIR-NET JRF, GATE, JEST, BARC, TIFR, IIT JAM, RPSC Asst. Professor)

36. An oscillating point dipole of moment  $\vec{p}(t) = \hat{z} p_0 \cos \omega t$  generates time-dependent electric and magnetic fields. At distances  $r$  far away from the dipole, the vector potential due to this dipole, in SI units, is

$$\vec{A} = \hat{z} \frac{\mu_0 p_0 \omega}{4\pi r} \sin \omega \left( t - \frac{r}{c} \right)$$

The total power radiated from this dipole is

(a)  $\frac{\mu_0 p_0^2 \omega^4}{12\pi c}$

(b)  $\frac{\mu_0 p_0^2 \omega^4}{8\pi c}$

(c)  $\frac{\mu_0 p_0^2 \omega^4}{16\pi^2 c}$

(d)  $\frac{\mu_0 p_0^2 \omega^4}{24\pi c}$





# Explore Physics By Himanshu

Centre of Excellence | Physical Science

(CSIR-NET JRF, GATE, JEST, BARC, TIFR, IIT JAM, RPSC Asst. Professor)

---

37. A radioactive tritium atom in its ground state undergoes a beta decay



where the  ${}^3_2\text{He}$  nucleus is stable. The probability that this beta decay will be followed immediately by emission of a photon is

- (a) 0.3
- (b) zero
- (c) 0.7
- (d) 0.5



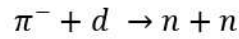
# Explore Physics By Himanshu

Centre of Excellence | Physical Science

(CSIR-NET JRF, GATE, JEST, BARC, TIFR, IIT JAM, RPSC Asst. Professor)

---

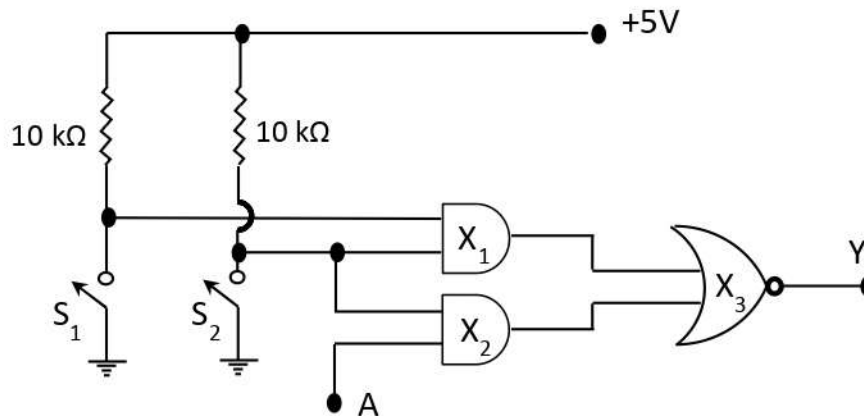
38. Consider the  $s$ -wave capture of a pion  $\pi^-$  by a deuteron  $d$  in its ground state, which then produces two neutrons, i.e.



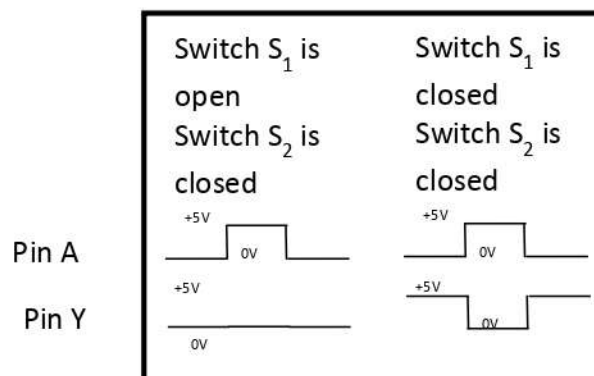
If we consider the two neutrons in the final state, they will satisfy

- (a)  $L = 1, S = 1$
- (b)  $L = 0, S = 1$
- (c)  $L = 1, S = 0$
- (d)  $L = 0, S = 1$

39. A sealed box containing a digital circuit has a circuit diagram pasted on its lid as shown below.



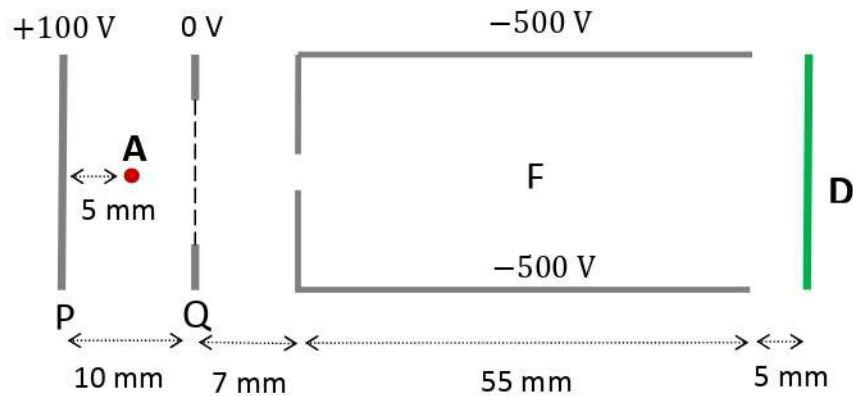
However, the output of the circuit is not as per this diagram. Some of the outputs actually obtained were as shown below



Based on this we can conclude that the actual circuit inside has

- (a) OR gates instead of AND gates ( $X_1$  and  $X_2$ )
- (b) NAND gate instead of NOR gate ( $X_3$ )
- (c) OR gate instead of NOR gate ( $X_3$ )
- (d) AND gate instead of NOR gate ( $X_3$ )

40. The following picture shows the cross-sectional view of an apparatus used to detect  $O^+$  ions produced in an experiment. The entire apparatus is kept in vacuum.



F is a conducting cylinder with a small aperture at its entrance. The electric potentials between various electrodes (except the detector D) are shown in the figure. The  $O^+$  ions are generated in its ground state at point A with negligible kinetic energy. The wire mesh on the electrode Q allows ions to pass through, and also maintains a uniform electric field in the PQ region. The dimensions of the spectrometer are shown in the figure.

The ions are detected by the detector D situated at the end of the flight tube. If the detector can only detect ions with kinetic energy more than 550 eV, the potential on the detector to detect the  $O^+$  ions must be

- (a) more negative than  $-500$  V
- (b) more positive than 500 V
- (c) zero, as the ions already have enough energy to be detected
- (d) more positive than  $-500$  V