



Explore Physics By Himanshu

Centre of Excellence | Physical Science

(CSIR-NET JRF, GATE, JEST, BARC, TIFR, IIT JAM, RPSC Asst. Professor)

GS-2020 Screening Test

Physics

INSTRUCTIONS FOR ALL CANDIDATES APPEARING FOR THE PHYSICS TEST FOR Ph.D. OR Integrated Ph.D.

PLEASE READ THESE INSTRUCTIONS CAREFULLY BEFORE YOU ATTEMPT THE QUESTIONS

- You may NOT keep with you any books, papers, mobile phones or any electronic devices which can be used to get/store information. **Use of scientific, non-programmable calculators is permitted.** Calculators which plot graphs are NOT allowed. Multiple-use devices, such as smart phones, etc. CANNOT be used as calculators.
- This test consists of TWO sections.
 - **SECTION A** comprises 25 questions, numbered Q. 1 — Q. 25. These are questions on basic topics.
 - **SECTION B** comprises 15 questions, numbered Q. 1 — Q. 15. These may require somewhat more thought/knowledge.
- ALL questions are Multiple-Choice Type. In each case, ONLY ONE option is correct. Answer them by clicking the radio button next to the relevant option.
- If your calculated answer does not match any of the given options exactly, you may mark the closest one if it is reasonably close.
- The **grading scheme** will be as follows:
Section A : +3 marks if correct; -1 mark if incorrect; 0 marks if not attempted
Section B : +5 marks if correct; 0 marks if incorrect or not attempted, i.e. NO negative marks.
- The invigilators will supply you with paper sheets for rough work.
- Do NOT ask the invigilators for clarifications regarding the questions. They have been instructed not to respond to any such queries. In case a correction/clarification is deemed necessary, it will be announced in the examination hall.
- You can get a list of **useful physical constants** by clicking on the link **Useful Data**. Make sure to use only these values in answering the questions, especially where the options are numerical.



Explore Physics By Himanshu

Centre of Excellence | Physical Science

(CSIR-NET JRF, GATE, JEST, BARC, TIFR, IIT JAM, RPSC Asst. Professor)

LIST OF USEFUL CONSTANTS RELEVANT FOR THE PHYSICS TEST FOR Ph.D. OR Integrated Ph.D.

When answering the questions please use only these values in your calculations

Physical Constants

Symbol	Name/Definition	Value (SI Units)	Value (Other Units)
c	speed of light in vacuum	$3 \times 10^8 \text{ m s}^{-1}$	
\hbar	reduced Planck constant ($= h/2\pi$)	$1.04 \times 10^{-34} \text{ J s}$	
G_N	gravitational constant	$6.67 \times 10^{-11} \text{ m}^3 \text{ kg}^{-1} \text{ s}^{-2}$	
M_\odot	solar mass	$1.989 \times 10^{30} \text{ kg}$	
ϵ_0	permittivity of free space	$8.85 \times 10^{-12} \text{ F m}^{-1}$	
μ_0	permeability of free space	$4\pi \times 10^{-7} \text{ N A}^{-2}$	
e	electron charge (magnitude)	$1.6 \times 10^{-19} \text{ C}$	
m_e	electron mass	$9.1 \times 10^{-31} \text{ kg}$	$= 0.511 \text{ MeV}/c^2$
a_0	Bohr radius	0.51 \AA	
	ionisation potential of H atom	13.6 eV	
N_A	Avogadro number	$6.023 \times 10^{23} \text{ mol}^{-1}$	
k_B	Boltzmann constant	$1.38 \times 10^{-23} \text{ J K}^{-1}$	$= 8.6173 \times 10^{-5} \text{ eV K}^{-1}$
$R = N_A k_B$	gas constant	$8.31 \text{ J mol}^{-1} \text{ K}^{-1}$	
$\gamma = C_p/C_v$	ratio of specific heats: monatomic gas	1.67	
	diatomic gas	1.40	
σ	Stefan-Boltzmann constant	$5.67 \times 10^{-8} \text{ W m}^{-2} \text{ K}^{-4}$	
α	fine structure constant ($= e^2/4\pi\epsilon_0\hbar c$)	1/137	
g	acceleration due to gravity	9.8 m s^{-2}	
R_E	radius of the Earth	$6.4 \times 10^3 \text{ Km}$	
R_S	radius of the Sun	$7 \times 10^5 \text{ Km}$	
m_p	proton mass ($\approx 2000 m_e$)	$1.7 \times 10^{-27} \text{ kg}$	$= 938.2 \text{ MeV}/c^2$
m_n	neutron mass ($\approx 2000 m_e$)	$1.7 \times 10^{-27} \text{ kg}$	$= 939.6 \text{ MeV}/c^2$

Conversion Factors

Symbol	Name/Definition	Value (SI Units)	Value (Other Units)
$\hbar c$	conversion constant		197.3 MeV fm
1 A.U.	mean distance of Earth from Sun	$1.5 \times 10^9 \text{ km}$	
1 a.m.u.	atomic mass unit	$1.6 \times 10^{-27} \text{ kg}$	$= 931.5 \text{ MeV}/c^2$
1 eV	electron Volt	$1.6 \times 10^{-19} \text{ J}$	
1 T	Tesla	10^4 gauss	
1 bar	mean atmospheric pressure at 0°C	$1.01 \times 10^5 \text{ Pa} (= \text{N m}^{-2})$	
1 \AA	Ångstrom unit	10^{-8} cm	
1 kWh	Commercial energy unit	$3.6 \times 10^6 \text{ J}$	

B-33, 2nd floor, Gopalpura Mod, Jaipur (Raj.) 8769 083 960

E. explorephysicsbyhimanshu@gmail.com | W. www.explorephysicsbyhimanshu.com



Explore Physics By Himanshu

Centre of Excellence | Physical Science

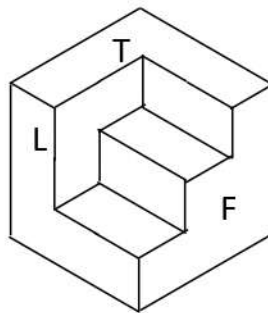
(CSIR-NET JRF, GATE, JEST, BARC, TIFR, IIT JAM, RPSC Asst. Professor)

Section A

(for both Int.-Ph.D. and Ph.D. candidates)

This Section consists of 25 questions. All are of multiple-choice type. Mark only one option on the online interface provided to you. If more than one option is marked, it will be assumed that the question has not been attempted. A correct answer will get +3 marks, an incorrect answer will get -1 mark.

1. A three-dimensional view of a solid is sketched below.



The three projections below are each intended to show the solid from its front (F), left side (L) and top (T), as marked in the figure. Which one is correct?

(a) ✓			
(b)			
(c)			
(d)			



Explore Physics By Himanshu

Centre of Excellence | Physical Science

(CSIR-NET JRF, GATE, JEST, BARC, TIFR, IIT JAM, RPSC Asst. Professor)

2. The limit

$$\lim_{x \rightarrow \infty} x \log \frac{x+1}{x-1}$$

evaluates to

- (a) 2 ✓
- (b) 0
- (c) ∞
- (d) 1



Explore Physics By Himanshu

Centre of Excellence | Physical Science

(CSIR-NET JRF, GATE, JEST, BARC, TIFR, IIT JAM, RPSC Asst. Professor)

3. The eigenvector e_1 corresponding to the smallest eigenvalue of the matrix

$$\begin{pmatrix} 2a^2 & a & 0 \\ a & 1 & a \\ 0 & a & 2a^2 \end{pmatrix}$$

where $a = \sqrt{\frac{3}{2}}$, is given (in terms of its transpose) by

(a) $e_1^T = \frac{1}{2} \left(\frac{1}{\sqrt{2}} \quad -\sqrt{3} \quad \frac{1}{\sqrt{2}} \right)$ ✓

(b) $e_1^T = \frac{1}{2} \left(\sqrt{\frac{3}{2}} \quad 1 \quad \sqrt{\frac{3}{2}} \right)$

(c) $e_1^T = \frac{1}{\sqrt{2}} (1 \quad 0 \quad -1)$

(d) $e_1^T = \frac{1}{\sqrt{2}} (1 \quad 0 \quad 1)$



Explore Physics By Himanshu

Centre of Excellence | Physical Science

(CSIR-NET JRF, GATE, JEST, BARC, TIFR, IIT JAM, RPSC Asst. Professor)

4. Consider the improper differential

$$ds = (1 + y^2) dx + xy dy$$

An integrating factor for this is

(a) $-x$ ✓

(b) $1 + x^2$

(c) xy

(d) $-1 + y^2$

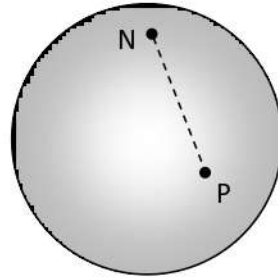


Explore Physics By Himanshu

Centre of Excellence | Physical Science

(CSIR-NET JRF, GATE, JEST, BARC, TIFR, IIT JAM, RPSC Asst. Professor)

5. Consider a sphere of radius R , with the north pole N marked as shown in the figure below.



The r.m.s. distance (straight line cutting through the sphere) of a point P on the sphere from this north pole N is given by

- (a) R
- (b) $2\sqrt{2/5} R$
- (c) $\sqrt{4\pi} R$
- (d) $\sqrt{2} R$ ✓



Explore Physics By Himanshu

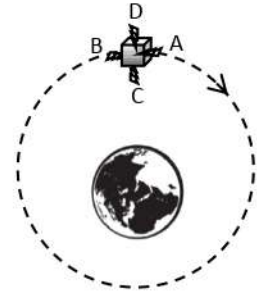
Centre of Excellence | Physical Science

(CSIR-NET JRF, GATE, JEST, BARC, TIFR, IIT JAM, RPSC Asst. Professor)

6. Consider a satellite orbiting the Earth in a circular orbit, as sketched in the figure on the right (not to scale). The satellite has four small thruster rockets, whose exhaust gases come out along

- (A) the forward direction,
- (B) the backward direction,
- (C) radially inward towards the Earth's centre, and
- (D) radially outward from the Earth's centre,

as indicated in the figure.



If the satellite wants to increase its speed, while remaining in a circular orbit, and has fuel enough to keep only one thruster rocket in operation, it should fire the rocket marked

- (a) A
- (b) B
- (c) C
- (d) D ✓

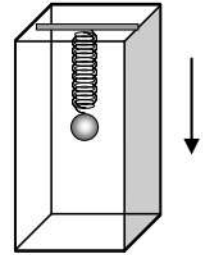


Explore Physics By Himanshu

Centre of Excellence | Physical Science

(CSIR-NET JRF, GATE, JEST, BARC, TIFR, IIT JAM, RPSC Asst. Professor)

7. A particle of mass m hangs from a light spring inside a lift (see figure). When the lift is at rest, the mass oscillates in the vertical direction with an angular frequency 2.5 rad/s . Now consider the following situation.



The suspended mass is at rest inside the lift which is descending vertically at a speed of 0.5 m/s . If the lift suddenly stops, the amplitude of oscillations of the mass will be

- (a) 0.20 m ✓
- (b) 0.25 m
- (c) 0.05 m
- (d) 1.25 m



Explore Physics By Himanshu

Centre of Excellence | Physical Science

(CSIR-NET JRF, GATE, JEST, BARC, TIFR, IIT JAM, RPSC Asst. Professor)

8. Consider two planets P_1 and P_2 which can be modeled as uniform spheres of radii R_1 and R_2 respectively, and of the same material with the same density and other physical properties. If the maximum possible height of a conical mountain (of the same material) on these planets is denoted by h_1 and h_2 respectively ($h_1 \ll R_1$, $h_2 \ll R_2$), then the ratio h_1/h_2 is
- (a) R_2/R_1 ✓
 - (b) R_1/R_2
 - (c) $R_2^{2/3}/R_1^{2/3}$
 - (d) $R_1^{2/3}/R_2^{2/3}$



Explore Physics By Himanshu

Centre of Excellence | Physical Science

(CSIR-NET JRF, GATE, JEST, BARC, TIFR, IIT JAM, RPSC Asst. Professor)

9. A particle of rest mass $\sqrt{3}$ g emerges from a gun with a velocity $v = c/4$. If the rest mass of the gun is 1 kg, its approximate speed of recoil will be
- (a) $c/1000$
 - (b) $c/2236$ ✓
 - (c) $c/1732$
 - (d) $c/2309$

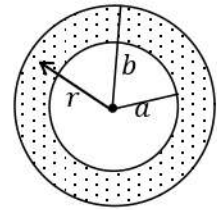


Explore Physics By Himanshu

Centre of Excellence | Physical Science

(CSIR-NET JRF, GATE, JEST, BARC, TIFR, IIT JAM, RPSC Asst. Professor)

10. Consider two concentric spheres of radii a and b , where $a < b$ (see figure). The (shaded) space between the two spheres is filled uniformly with total charge Q . The electric field at any point between the two spheres at distance r from the centre is given by



(a) $\frac{Q}{4\pi\epsilon_0} \frac{r^3 - a^3}{r^2(b^3 - a^3)}$ ✓

(b) $\frac{Q}{4\pi\epsilon_0} \frac{1}{r^2}$

(c) $\frac{Q}{4\pi\epsilon_0} \left(\frac{b}{r^4} - \frac{a}{r^4} \right)^{2/3}$

(d) zero



Explore Physics By Himanshu

Centre of Excellence | Physical Science

(CSIR-NET JRF, GATE, JEST, BARC, TIFR, IIT JAM, RPSC Asst. Professor)

11. A metallic wire of uniform cross-section and resistance R is bent into a circle of radius a . The circular loop is placed in a magnetic field $\vec{B}(t)$ which is perpendicular to the plane of the wire. This magnetic field is uniform over space, but its magnitude decreases with time at a constant rate k , where

$$k = -\frac{d|\vec{B}(t)|}{dt}$$

The tension in the metallic wire is

(a) $\frac{\pi a^3 k}{2R} |\vec{B}(t)|$ ✓

(b) $\frac{\pi a^3 k}{R} |\vec{B}(t)|$

(c) $\frac{2\pi a^3 k}{R} |\vec{B}(t)|$

(d) zero



Explore Physics By Himanshu

Centre of Excellence | Physical Science

(CSIR-NET JRF, GATE, JEST, BARC, TIFR, IIT JAM, RPSC Asst. Professor)

12. Four students were asked to write down possible forms for the magnetic vector potential $\vec{A}(\vec{x})$ corresponding to a uniform magnetic field of magnitude B along the positive z direction. Three returned correct answers and one returned an incorrect answer. Their answers are reproduced below. Which was the incorrect answer?

(a) $Bx \hat{j}$

(b) $-By \hat{i}$

(c) $\frac{1}{2}(Bx \hat{i} - By \hat{j})$

(d) $\frac{1}{2}(-By \hat{i} + Bx \hat{j})$ ✓



Explore Physics By Himanshu

Centre of Excellence | Physical Science

(CSIR-NET JRF, GATE, JEST, BARC, TIFR, IIT JAM, RPSC Asst. Professor)

13. The components of the electric and magnetic fields corresponding to a plane electromagnetic field propagating in vacuum satisfy

$$E_x = E_y = -E_z = \frac{|\vec{E}|}{\sqrt{3}} \quad B_x = -B_y = \frac{|\vec{B}|}{\sqrt{2}} \quad B_z = 0$$

A unit vector along the direction of propagation of the plane wave is

- (a) $\frac{\hat{i} + \hat{j} + 2\hat{k}}{\sqrt{6}}$
- (b) $-\frac{\hat{i} + \hat{j} + 2\hat{k}}{\sqrt{6}}$ ✓
- (c) $\frac{2\hat{i} - 2\hat{j} + \hat{k}}{\sqrt{3}}$
- (d) $-\frac{2\hat{i} - 2\hat{j} + \hat{k}}{\sqrt{3}}$



Explore Physics By Himanshu

Centre of Excellence | Physical Science

(CSIR-NET JRF, GATE, JEST, BARC, TIFR, IIT JAM, RPSC Asst. Professor)

14. A gas has the following equation of state

$$U = \frac{a S^5}{N^2 V^2}$$

where U is the internal energy, V is the volume and N is the number of particles. Here a is a constant of the appropriate dimension. It follows that the equation of state of this gas relating its pressure P to its temperature T and its density $\rho = N/V$ is given by

(a) $\frac{P^4}{T^5 \rho^2} = \text{constant}$ ✓

(b) $\frac{P^5}{T^4 \rho^3} = \text{constant}$

(c) $\frac{P}{T \rho} = \text{constant}$

(d) $\frac{P^3}{T^2 \rho^3} = \text{constant}$

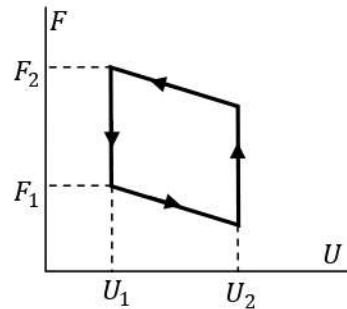


Explore Physics By Himanshu

Centre of Excellence | Physical Science

(CSIR-NET JRF, GATE, JEST, BARC, TIFR, IIT JAM, RPSC Asst. Professor)

15. An ideal gas is passed through a cyclic process where the corresponding changes in the thermodynamic potentials are plotted on the adjoining graph. Here U is the internal energy and F is the Helmholtz free energy.



The efficiency of this cycle is given by

- (a) $1 - \frac{U_1}{U_2}$ ✓
- (b) $1 - \exp\left(-\frac{F_2}{F_1}\right)$
- (c) $1 - \frac{U_1}{U_2} \exp\left(-\frac{F_2}{F_1}\right)$
- (d) $\exp\left(\frac{U_1}{U_2}\right) - \exp\left(-\frac{F_2}{F_1}\right)$



Explore Physics By Himanshu

Centre of Excellence | Physical Science

(CSIR-NET JRF, GATE, JEST, BARC, TIFR, IIT JAM, RPSC Asst. Professor)

16. The mean free path λ of molecules of a gas at room temperatures is given approximately by

$$\lambda = \frac{1}{n\sigma}$$

where n is the number density of the molecules and σ is the collision cross-section of two molecules. It follows that the mean free path of air molecules at normal temperature and pressure is of order

- (a) 500 μm
- (b) 50 nm ✓
- (c) 0.5 nm
- (d) 500 fm

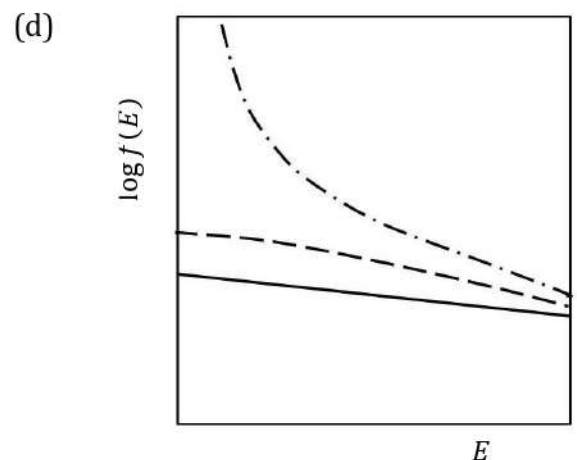
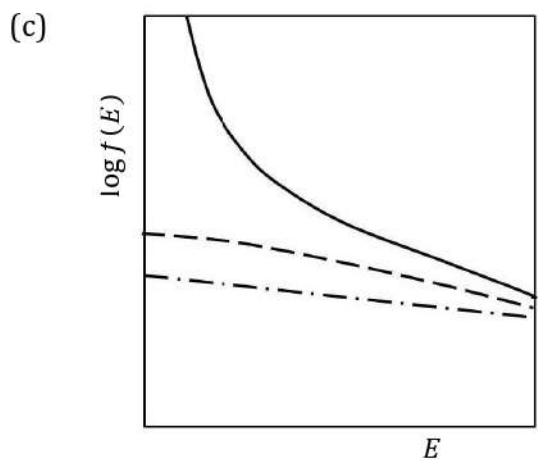
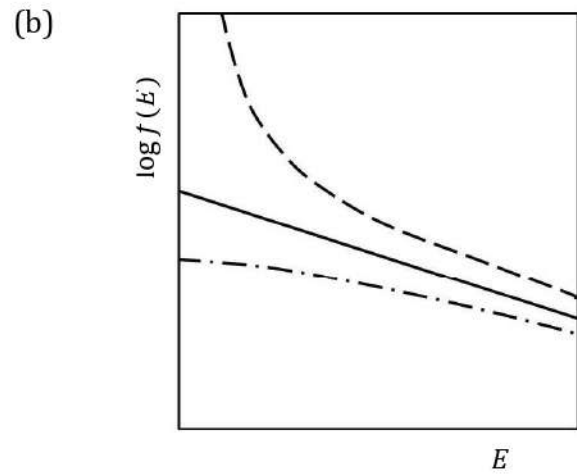
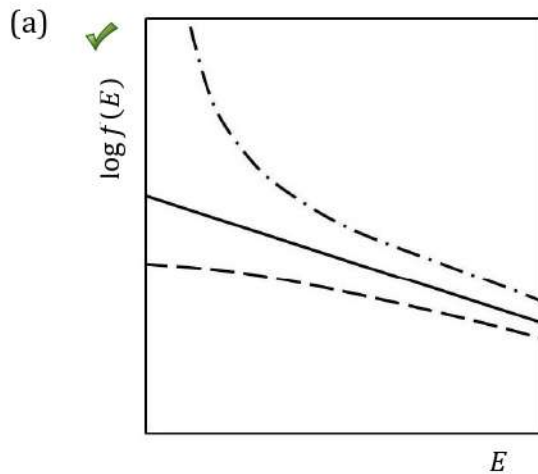


Explore Physics By Himanshu

Centre of Excellence | Physical Science

(CSIR-NET JRF, GATE, JEST, BARC, TIFR, IIT JAM, RPSC Asst. Professor)

17. Four students are asked to draw on the same semi-logarithmic plot the energy distributions $f(E)$ of a classical gas (with a solid line), a boson gas (with a dashed line) and a fermion gas (with a dash-dot line) respectively, each as a function of energy E . Only one student's answer was correct. The graphs submitted by the four students are given below. The correct one is





Explore Physics By Himanshu

Centre of Excellence | Physical Science

(CSIR-NET JRF, GATE, JEST, BARC, TIFR, IIT JAM, RPSC Asst. Professor)

18. The wave function of a particle subjected to a three-dimensional spherically-symmetric potential $V(r)$ is given by

$$\psi(\vec{x}) = (x + y + 3z) f(r)$$

The expectation value for the operator \vec{L}^2 for this state is

- (a) \hbar^2
- (b) $2\hbar^2$ ✓
- (c) $5\hbar^2$
- (d) $11\hbar^2$



Explore Physics By Himanshu

Centre of Excellence | Physical Science

(CSIR-NET JRF, GATE, JEST, BARC, TIFR, IIT JAM, RPSC Asst. Professor)

19. A fermion of mass m , moving in two dimensions, is strictly confined inside a square box of side ℓ . The potential inside is zero. A measurement of the energy of the fermion yields the result

$$E = \frac{65\pi^2 \hbar^2}{2m\ell^2}$$

The degeneracy of this energy state is

- (a) 2
- (b) 4
- (c) 8 ✓
- (d) 16



Explore Physics By Himanshu

Centre of Excellence | Physical Science

(CSIR-NET JRF, GATE, JEST, BARC, TIFR, IIT JAM, RPSC Asst. Professor)

20. A sample of hydrogen gas was placed in a discharge tube and its spectrum was measured using a high-resolution spectrometer. The H_α line in the spectrum was found to be split into two lines, a high intensity line at 656.28 nm, and a low intensity line at 656.01 nm. This indicates that the hydrogen sample was contaminated with

- (a) deuterium
- (b) tritium
- (c) helium ✓
- (d) water vapour



Explore Physics By Himanshu

Centre of Excellence | Physical Science

(CSIR-NET JRF, GATE, JEST, BARC, TIFR, IIT JAM, RPSC Asst. Professor)

21. The momentum operator

$$i\hbar \frac{d}{dx}$$

acts on a wavefunction $\psi(x)$. This operator is Hermitian

- (a) provided the wavefunction $\psi(x)$ is normalized
- (b) provided the wavefunction $\psi(x)$ and derivate $\psi'(x)$ are continuous everywhere
- ✓ (c) provided the wavefunction $\psi(x)$ vanishes as $x \rightarrow \pm\infty$
- (d) by its very definition

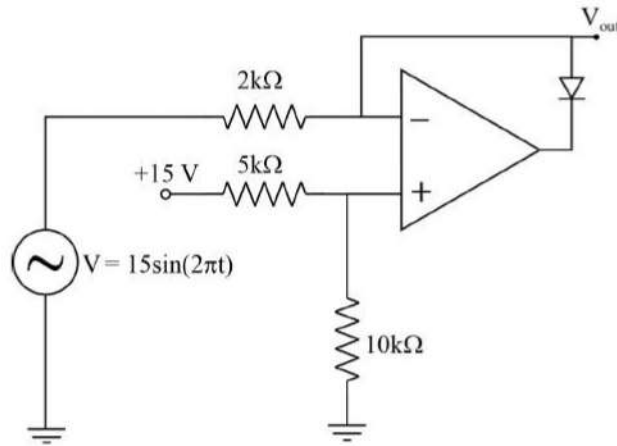


Explore Physics By Himanshu

Centre of Excellence | Physical Science

(CSIR-NET JRF, GATE, JEST, BARC, TIFR, IIT JAM, RPSC Asst. Professor)

22.



In the above circuit, which of the following is the maximum value, in Volts, of voltage at V_{out} ?

- (a) 10 ✓
- (b) 15
- (c) 0
- (d) 5



Explore Physics By Himanshu

Centre of Excellence | Physical Science

(CSIR-NET JRF, GATE, JEST, BARC, TIFR, IIT JAM, RPSC Asst. Professor)

23. A badly-designed voltmeter is modeled as an ideal voltmeter with a large resistor (R) and a large capacitor (C) connected in parallel to it. Given this information, which of the following statements describes what happens when this voltmeter is connected to a DC voltage source with voltage V and internal resistance r ($r \ll R$)?
- ✓ (a) The reading on the voltmeter rises slowly and becomes steady at a value slightly less than V .
 - (b) The reading on the voltmeter starts at a value slightly less than V and slowly falls to zero.
 - (c) The reading on the voltmeter rises slowly to a maximum value close to V and then slowly goes to zero.
 - (d) The reading on the voltmeter reads zero even when connected to the voltage source.



Explore Physics By Himanshu

Centre of Excellence | Physical Science

(CSIR-NET JRF, GATE, JEST, BARC, TIFR, IIT JAM, RPSC Asst. Professor)

24. An OR gate, a NOR gate and an XOR gate are to be constructed using only NAND gates.

If the minimum number of NAND gates needed to construct OR, NOR and XOR gates is denoted $n(\text{OR})$, $n(\text{NOR})$ and $n(\text{XOR})$ respectively, then

- (a) $n(\text{NOR}) = n(\text{XOR}) > n(\text{OR})$ ✓
- (b) $n(\text{NOR}) = n(\text{XOR}) = n(\text{OR})$
- (c) $n(\text{NOR}) > n(\text{XOR}) > n(\text{OR})$
- (d) $n(\text{NOR}) < n(\text{XOR}) = n(\text{OR})$



Explore Physics By Himanshu

Centre of Excellence | Physical Science

(CSIR-NET JRF, GATE, JEST, BARC, TIFR, IIT JAM, RPSC Asst. Professor)

25. On passing electric current, a tungsten filament is emitting electrons by thermionic emission. In order to maintain the energy of the electron beam obtained from this source at a value approximately 100 eV, which of the following methods will work in practice ?
- ✓ (a) Float the filament at -100 Volts with a grounded aperture in front of it.
 - (b) Heat the filament so that the emitted electrons will have 100 eV kinetic energy due to temperature.
 - (c) Apply a $+100$ Volts potential with respect to the filament potential to an aperture kept very close to the filament.
 - (d) Use an appropriate magnetic field to draw out the electron beam at the desired energy without applying any electric field.



Explore Physics By Himanshu

Centre of Excellence | Physical Science

(CSIR-NET JRF, GATE, JEST, BARC, TIFR, IIT JAM, RPSC Asst. Professor)

Section B

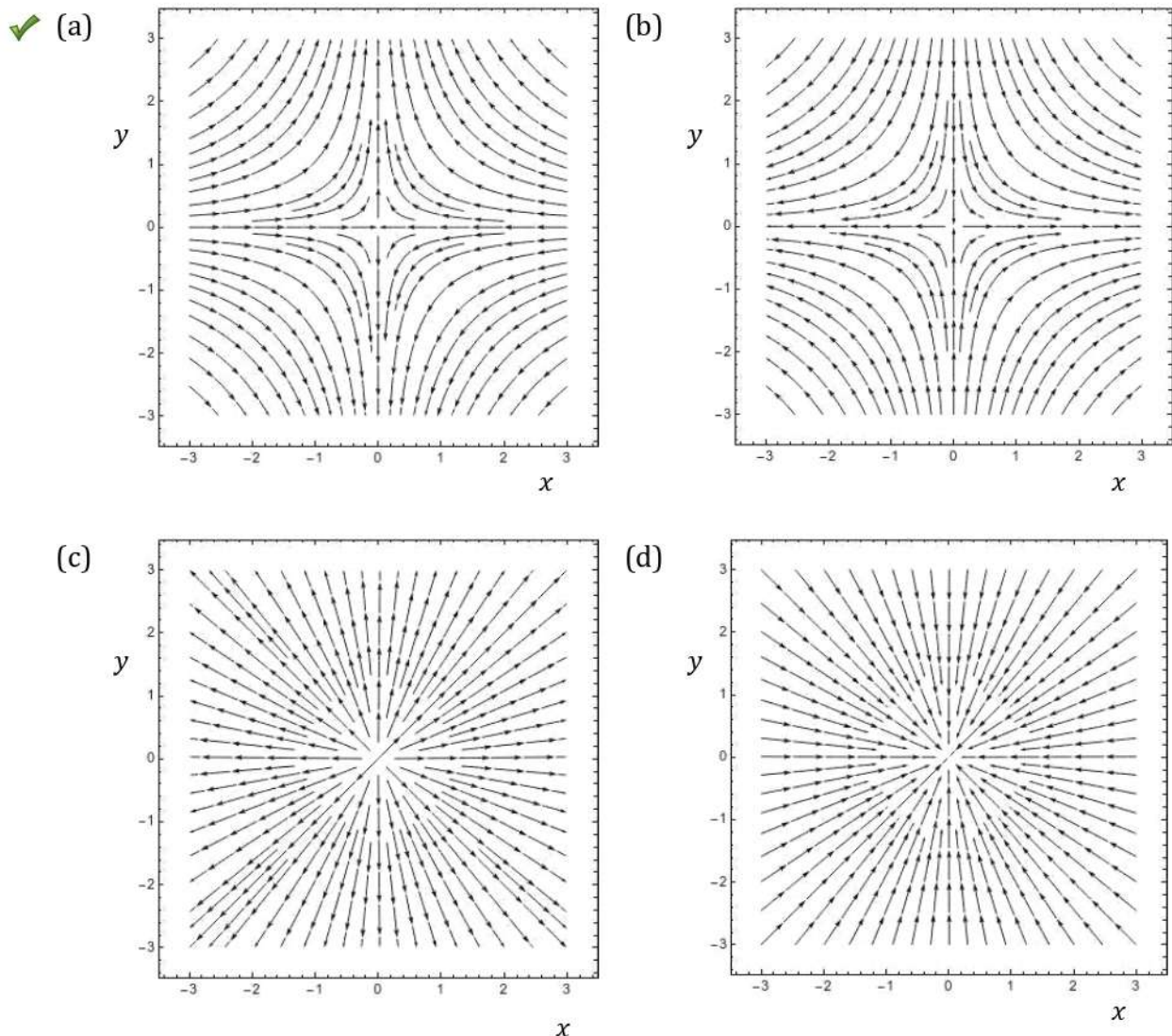
(only for Int.-Ph.D. candidates)

This Section consists of 15 questions. All are of multiple-choice type. Mark only one option on the online interface provided to you. If more than one option is marked, it will be assumed that the question has not been attempted. A correct answer will get +5 marks, an incorrect answer will get 0 mark.

26. A two-dimensional electrostatic field is defined as

$$\vec{E}(x, y) = -x\hat{i} + y\hat{j}$$

A correct diagram for the lines of force is





Explore Physics By Himanshu

Centre of Excellence | Physical Science

(CSIR-NET JRF, GATE, JEST, BARC, TIFR, IIT JAM, RPSC Asst. Professor)

27. The sum of the infinite series

$$S = 1 + \frac{3}{5} + \frac{6}{25} + \frac{10}{125} + \frac{15}{625} + \dots$$

is given by

(a) $S = \frac{125}{64}$ ✓

(b) $S = \frac{25}{16}$

(c) $S = \frac{25}{24}$

(d) $S = \frac{16}{25}$

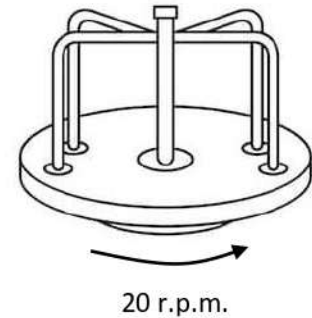


Explore Physics By Himanshu

Centre of Excellence | Physical Science

(CSIR-NET JRF, GATE, JEST, BARC, TIFR, IIT JAM, RPSC Asst. Professor)

28. A roundabout whose rotating base is a heavy uniform disc of radius 2 m and mass 400 kg has a central pillar and handles which are of negligible mass (see figure). The roundabout is set rotating at a steady rate of 20 r.p.m.



Four small children, of mass 10 kg, 20 kg, 30 kg and 40 kg respectively, step gently on to the edge of the roundabout, each with velocity 7.2 km/hr along a tangential direction and cling to the handles. After holding on for some time, the children step gently off the roundabout with the same velocity, but this time in a radial direction.

Neglecting all effects of friction and air drag, the final rate of rotation of the roundabout will be about

- (a) 28 r.p.m.
- (b) 25 r.p.m. ✓
- (c) 36 r.p.m
- (d) 21 r.p.m.

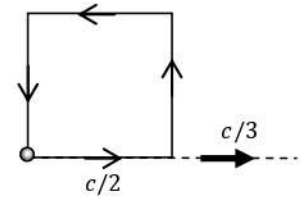


Explore Physics By Himanshu

Centre of Excellence | Physical Science

(CSIR-NET JRF, GATE, JEST, BARC, TIFR, IIT JAM, RPSC Asst. Professor)

29. In the laboratory frame, a particle at rest starts moving with a speed $c/2$ from one corner of a square (see figure) and traverses the four sides of the square so that it returns to its original position. At each corner, it changes direction without any change in speed.



If the entire square now moves with a speed $c/3$ in the laboratory frame, as indicated in the figure, the speed of the particle (in the laboratory frame) when it returns to its original position will be

- (a) $\frac{2\sqrt{2}c}{15}$ ✓
- (b) $\frac{c}{5}$
- (c) $\frac{2\sqrt{2}c}{3}$
- (d) $\frac{c}{5\sqrt{3}}$

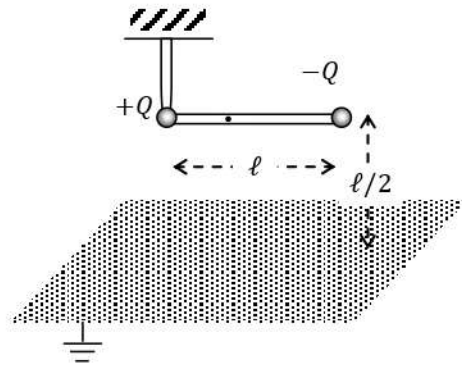


Explore Physics By Himanshu

Centre of Excellence | Physical Science

(CSIR-NET JRF, GATE, JEST, BARC, TIFR, IIT JAM, RPSC Asst. Professor)

30. A light rigid insulating rod of length ℓ is suspended horizontally from a rigid frictionless pivot at one of the ends (see figure). At a vertical distance h below the rod there is an infinite plane conducting plane, which is grounded.



If two small, light spherical conductors are attached at the ends of the rod and given charges $+Q$ and $-Q$ as indicated in the figure, the torque on the rod will be

(a) $\frac{Q^2}{4\pi\epsilon_0\ell} \hat{k}$

(b) $-\frac{Q^2}{4\pi\epsilon_0\ell} \hat{k}$

(c) $\frac{(4 - \sqrt{2})}{16\pi\epsilon_0} \frac{Q^2}{\ell} \hat{k}$

(d) $-\frac{(4 - \sqrt{2})}{16\pi\epsilon_0} \frac{Q^2}{\ell} \hat{k}$ ✓



Explore Physics By Himanshu

Centre of Excellence | Physical Science

(CSIR-NET JRF, GATE, JEST, BARC, TIFR, IIT JAM, RPSC Asst. Professor)

31. The magnetic vector potential $\vec{A} \equiv A_x \hat{i} + A_y \hat{j} + A_z \hat{k}$ is defined in a region R of space by

$$A_x = 5 \cos \pi y$$

$$A_y = 2 + \sin \pi x$$

$$A_z = 0$$

in an appropriate unit.

If L be a square loop of wire in the x - y plane, with its ends at

$$(0, 0) \quad (0, 0.25) \quad (0.25, 0.25) \quad (0.25, 0)$$

in an appropriate unit and it lies entirely in the region R, the numerical value of the flux of the above magnetic field (in the same units) passing through L is

- (a) 0.543 ✓
(b) 3.31
(c) -0.75
(d) zero



Explore Physics By Himanshu

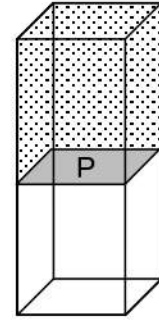
Centre of Excellence | Physical Science

(CSIR-NET JRF, GATE, JEST, BARC, TIFR, IIT JAM, RPSC Asst. Professor)

32. The volume V of a rectangular box is divided into two equal parts by a solid non-permeable partition P . On one side of the partition P there is a vacuum, while the other side is filled with a real gas having equation of state

$$pVe^{a/RTV} = nRT$$

where a and b are constants, The gas was initially at a uniform temperature T_0 . Then the partition P was removed instantaneously, and the gas was allowed to expand to fill the full volume of the box and come to equilibrium.



The final temperature of the gas, in terms of its specific heat C_V will be

(a) $T - \left(\frac{na}{C_V}\right) \ln 2$ ✓

(b) $T + \left(\frac{na}{C_V}\right) \ln 2$

(c) $T - 2n \left(\frac{RTa}{C_V}\right)^{3/2}$

(d) $T + 2n \left(\frac{RTa}{C_V}\right)^{3/2}$



Explore Physics By Himanshu

Centre of Excellence | Physical Science

(CSIR-NET JRF, GATE, JEST, BARC, TIFR, IIT JAM, RPSC Asst. Professor)

33. A system is composed of a large number of non-interacting classical particles moving in two dimensions, which individually obey the Hamiltonian

$$\frac{p_x^2 + p_y^2}{2m} + \frac{1}{2}m\omega^2(x^2 + y^2)$$

and the system is connected to a heat bath at a temperature T .

The probability of finding a particle within a radius R from the origin is given by

(a) $1 - \exp\left(-\frac{m\omega^2 R^2}{2T}\right)$ ✓

(b) $\exp\left(-\frac{m\omega^2 R^2}{2T}\right)$

(c) $\operatorname{erf}\left(\sqrt{\frac{m}{2T}} \omega R\right)$

(d) $1 - \frac{m\omega^2 R^2}{2T}$



Explore Physics By Himanshu

Centre of Excellence | Physical Science

(CSIR-NET JRF, GATE, JEST, BARC, TIFR, IIT JAM, RPSC Asst. Professor)

34. A particle of mass m is confined inside a box with boundaries at $x = \pm L$. The ground state and the first excited state of this particle are E_1 and E_2 respectively.

Now a repulsive delta function potential $\lambda\delta(x)$ is introduced at the centre of the box where the constant λ satisfies

$$0 < \lambda \ll \frac{1}{32m} \left(\frac{h}{L}\right)^2$$

If the energies of the new ground state and the new first excited state be denoted as E'_1 and E'_2 respectively, it follows that

- (a) $E'_1 > E_1, E'_2 > E_2$
- (b) $E'_1 = E_1, E'_2 = E_2$
- (c) $E'_1 > E_1, E'_2 = E_2$ ✓
- (d) $E'_1 = E_1, E'_2 > E_2$



Explore Physics By Himanshu

Centre of Excellence | Physical Science

(CSIR-NET JRF, GATE, JEST, BARC, TIFR, IIT JAM, RPSC Asst. Professor)

35. Three noninteracting particles whose masses are in the ratio 1:4:16 are placed together in the same harmonic oscillator potential $V(x)$.

The degeneracies of the first three energy eigenstates (ordered by increasing energy) will be

(a) 1, 1, 1

(b) 1, 1, 2 ✓

(c) 1, 2, 1

(d) 1, 2, 2

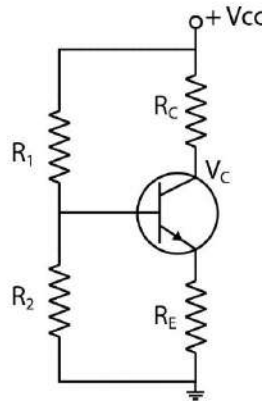


Explore Physics By Himanshu

Centre of Excellence | Physical Science

(CSIR-NET JRF, GATE, JEST, BARC, TIFR, IIT JAM, RPSC Asst. Professor)

36. The circuit shown below represents a typical voltage-divider bias circuit for a transistor. Assume that resistance values and voltage values are typical for using the transistor as an amplifier.



Which of the following changes in the circuit would result in an increase in the collector voltage V_C ?

- (a) R_2 is decreased slightly ✓
- (b) R_2 is increased slightly
- (c) R_c is decreased slightly
- (d) R_c is increased slightly



Explore Physics By Himanshu

Centre of Excellence | Physical Science

(CSIR-NET JRF, GATE, JEST, BARC, TIFR, IIT JAM, RPSC Asst. Professor)

37. A beam of X-rays is incident upon a powder sample of a material which forms simple cubic crystals of lattice constant 5.5 \AA . The maximum wavelength of the X-rays which can produce diffraction from the planes with Miller indices $(0,0,5)$ is
- (a) 2.2 \AA ✓
 - (b) 55.0 \AA
 - (c) 1.1 \AA
 - (d) 27.5 \AA

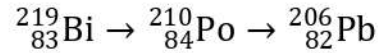


Explore Physics By Himanshu

Centre of Excellence | Physical Science

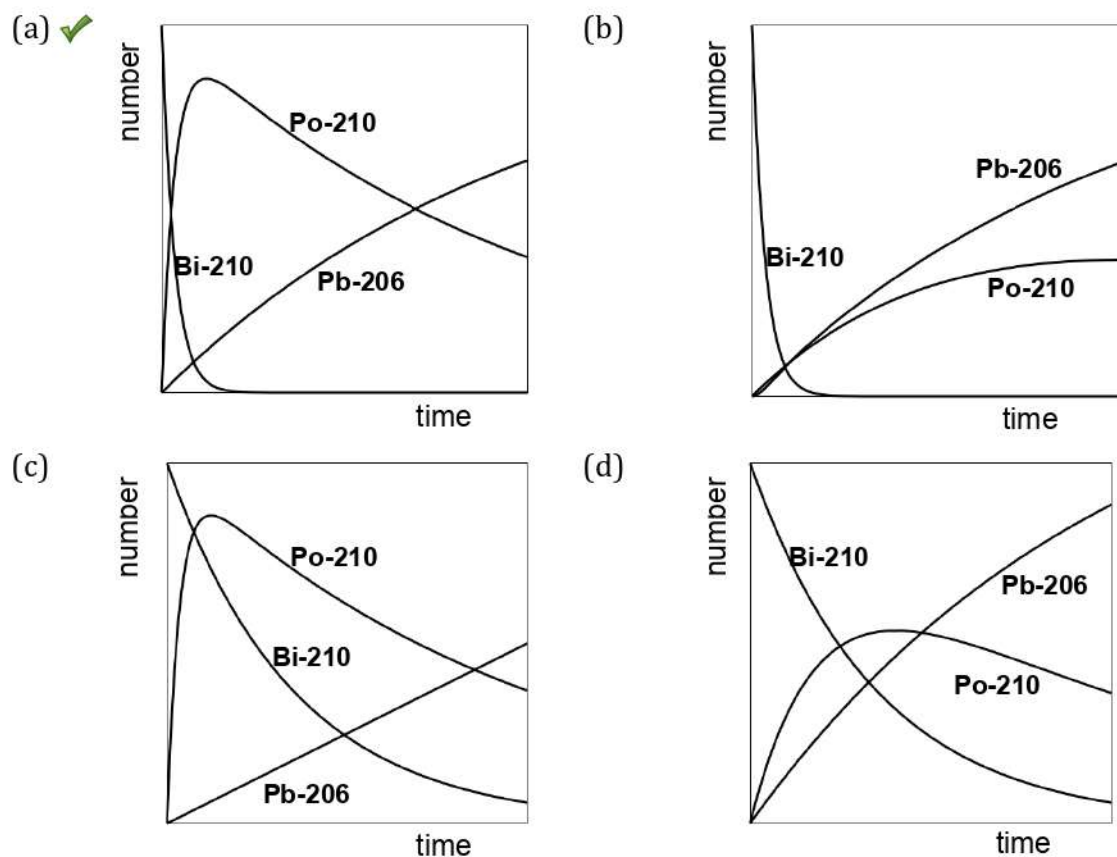
(CSIR-NET JRF, GATE, JEST, BARC, TIFR, IIT JAM, RPSC Asst. Professor)

38. Consider the nuclear decay chain of radio-Bismuth to Polonium to Lead, i.e.



where Pb-206 (${}^{206}_{82}\text{Pb}$) is a stable nucleus, and Bi-210 (${}^{210}_{83}\text{Bi}$) and Po-210 (${}^{210}_{84}\text{Po}$) are radioactive nuclei with half lives of about 5 days and 138 days respectively.

If we start with a sample of pure Bi-210 (${}^{210}_{83}\text{Bi}$), then a possible graph for the time evolution of the number of nuclei of these three species will be



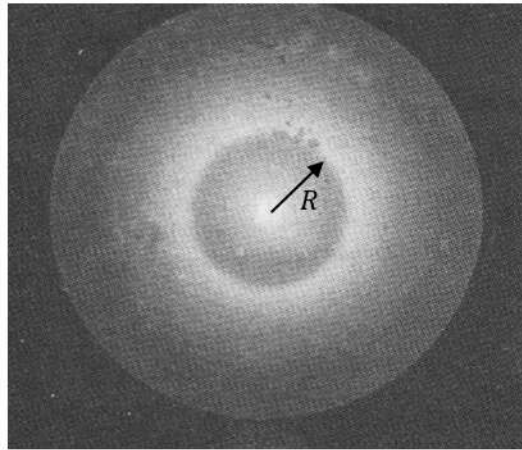


Explore Physics By Himanshu

Centre of Excellence | Physical Science

(CSIR-NET JRF, GATE, JEST, BARC, TIFR, IIT JAM, RPSC Asst. Professor)

39. A monochromatic laser beam is incident on a wet piece of filter paper atop a sheet of glass of thickness d . The pattern observed on the paper is



If the radius of the inner ring observed is R , the refractive index of the glass must be

(a) $\sin \left\{ \tan^{-1} \left(\frac{R}{2d} \right) \right\}$ ✓

(b) $\sin \left\{ \tan^{-1} \left(\frac{R}{d} \right) \right\}$

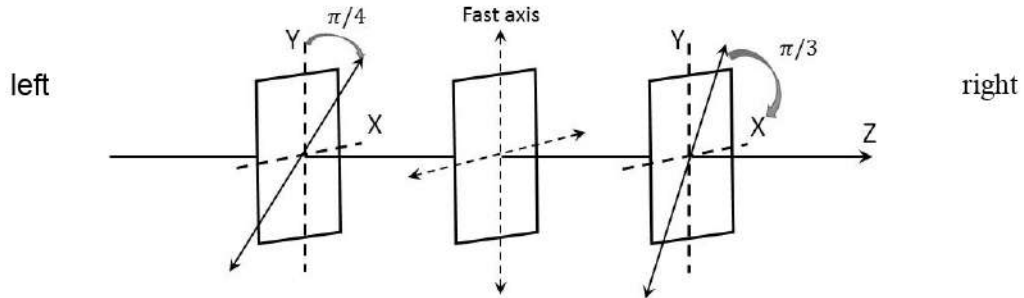
(c) $\tan \left\{ \sin^{-1} \left(\frac{R}{2d} \right) \right\}$

(d) $\tan \left\{ \sin^{-1} \left(\frac{R}{d} \right) \right\}$

40. A plane polarised light wave with electric field expressed as

$$\vec{E}(z, t) = E_0 \hat{j} \cos(kz - \omega t)$$

is incident from the left on the apparatus as sketched below.



The apparatus consists of (from left to right) a polariser with transmission axis at $\pi/4$ w.r.t. the y -axis, followed by a quarter-wave plate with fast axis along the y -axis, and finally, a polariser with transmission axis at $\pi/3$ about the x -axis.

If the incident intensity of the wave is I_0 , What will be the intensity of the light emerging out of the apparatus (on the right)?

- (a) $I_0/4$ ✓
- (b) $I_0/8$
- (c) $3I_0/8$
- (d) $I_0/16$



Explore Physics By Himanshu

Centre of Excellence | Physical Science

(CSIR-NET JRF, GATE, JEST, BARC, TIFR, IIT JAM, RPSC Asst. Professor)

Section B

(only for Ph.D. candidates)

This Section consists of 15 questions. All are of multiple-choice type. Mark only one option on the online interface provided to you. If more than one option is marked, it will be assumed that the question has not been attempted. A correct answer will get +5 marks, an incorrect answer will get 0 mark.

26. The solution of the differential equation

$$\frac{dy}{dx} = 1 + \frac{y}{x} - \frac{y^2}{x^2}$$

for $x > 0$ with the boundary condition $y = 0$ at $x = 1$. is given by $y(x) =$

(a) $\frac{x(x^2 - 1)}{x^2 + 1}$ ✓

(b) $\frac{x(x - 1)}{x + 1}$

(c) $\frac{x - 1}{x + 1}$

(d) $\frac{x^2 - 1}{x^2 + 1}$



Explore Physics By Himanshu

Centre of Excellence | Physical Science

(CSIR-NET JRF, GATE, JEST, BARC, TIFR, IIT JAM, RPSC Asst. Professor)

27. The value of the integral

$$\int_0^{\infty} \frac{dx}{x^4 + 4}$$

is

(a) $\frac{\pi}{8}$ ✓

(b) $\frac{3\pi}{8}$

(c) 2π

(d) $\frac{\pi}{4}$

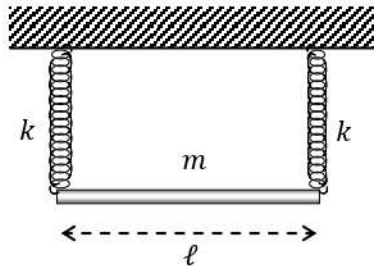


Explore Physics By Himanshu

Centre of Excellence | Physical Science

(CSIR-NET JRF, GATE, JEST, BARC, TIFR, IIT JAM, RPSC Asst. Professor)

28. A uniform rod of length ℓ and mass m is suspended horizontally from a rigid support by two identical massless springs, each with stiffness constant k , as sketched below.



If the springs can move only in the vertical direction, the frequency of small oscillations of the rod about equilibrium is given by

- (a) $\sqrt{2k/m}$ and $\sqrt{6k/m}$ ✓
- (b) $\sqrt{2k/m}$ and $\sqrt{2\pi k/m}$
- (c) $\sqrt{\pi k/2m}$ and $\sqrt{6k/m}$
- (d) $\sqrt{k/m}$ and $\sqrt{2\pi k/m}$



Explore Physics By Himanshu

Centre of Excellence | Physical Science

(CSIR-NET JRF, GATE, JEST, BARC, TIFR, IIT JAM, RPSC Asst. Professor)

29. The Lagrangian of a system described by generalised coordinates q_1 and q_2 is given by

$$L = \frac{a}{2}(\dot{q}_1^2 + \dot{q}_2^2) - \frac{b^2}{\pi}(q_1^2 + q_2^2)$$

where a and b are constants. It follows that a conserved quantity in this system is

(a) $q_1\dot{q}_2 - q_2\dot{q}_1$ ✓

(b) $q_1\dot{q}_2 + q_2\dot{q}_1$

(c) $\frac{q_1\dot{q}_2 - q_2\dot{q}_1}{q_1^2 + q_2^2}$

(d) $2\pi(q_1^2\dot{q}_2 + q_2^2\dot{q}_1)$

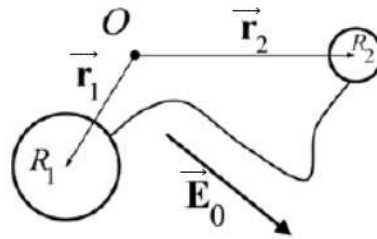


Explore Physics By Himanshu

Centre of Excellence | Physical Science

(CSIR-NET JRF, GATE, JEST, BARC, TIFR, IIT JAM, RPSC Asst. Professor)

30. Two conducting uncharged spheres of radii R_1 and R_2 are connected by an infinitesimally thin wire. The centres of the spheres are located at \vec{r}_1 and \vec{r}_2 respectively with respect to the origin O . The system is subjected to a uniform external electric field \vec{E}_0 .



If the wire cannot support a net charge and the two spheres are separated by distance much larger than the radii of each of them, the induced dipole moment in the system would be

- (a) $4\pi\epsilon_0 \frac{R_1 R_2}{R_1 + R_2} \{\vec{E}_0 \cdot (\vec{r}_2 - \vec{r}_1)\} (\vec{r}_2 - \vec{r}_1)$
- (b) $\frac{1}{4\pi\epsilon_0} \frac{R_1 R_2}{(R_1 + R_2)} \{\vec{E}_0 \cdot (\vec{r}_2 - \vec{r}_1)\} (\vec{r}_2 - \vec{r}_1)$
- (c) $4\pi\epsilon_0 \frac{R_1 + R_2}{R_1 R_2} \{\vec{E}_0 \cdot (\vec{r}_2 - \vec{r}_1)\} (\vec{r}_2 - \vec{r}_1)$ ✓
- (d) zero



Explore Physics By Himanshu

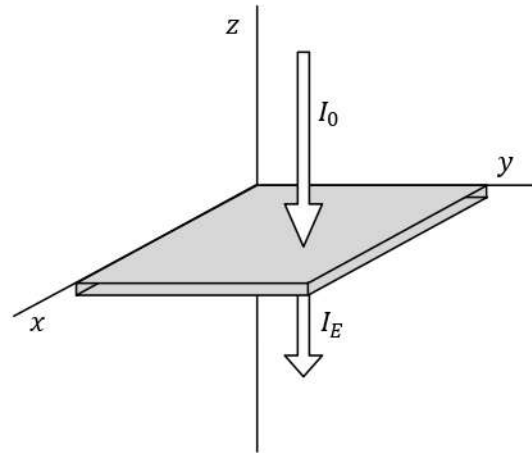
Centre of Excellence | Physical Science

(CSIR-NET JRF, GATE, JEST, BARC, TIFR, IIT JAM, RPSC Asst. Professor)

31. Consider the following situation.

An infinite plane metallic plate of thickness 1.8 cm is placed along the x - y plane, with the z axis normal to the sheet (see figure).

A plane radio wave of intensity I_0 and frequency 29.5 MHz propagates in vacuum along the negative z -axis and strikes the metal foil at normal incidence.



If the metal of the foil has conductivity $5.9 \Omega^{-1}\text{m}^{-1}$ and magnetic permeability $\mu \approx 1$, the intensity I_E of the emergent wave will be approximately

- (a) $0.26 I_0$ ✓
- (b) $0.51 I_0$
- (c) $0.29 \times 10^{-7} I_0$
- (d) $2.08 \times 10^{-4} I_0$



Explore Physics By Himanshu

Centre of Excellence | Physical Science

(CSIR-NET JRF, GATE, JEST, BARC, TIFR, IIT JAM, RPSC Asst. Professor)

32. In a certain atom, the ground state and first excited state of the valence electron are -7.8 eV and -3.9 eV, while all the higher excited states have energies very close to zero. The ground state has a degeneracy of 2, while the first excited state has a degeneracy of 6.

It follows that if these atoms reside in the outer layers of a blue giant star at a temperature around 2.32×10^4 K, the average energy per atom will be approximately

- (a) -5.1 eV
- (b) -5.9 eV
- (c) -6.8 eV ✓
- (d) -4.4 eV



Explore Physics By Himanshu

Centre of Excellence | Physical Science

(CSIR-NET JRF, GATE, JEST, BARC, TIFR, IIT JAM, RPSC Asst. Professor)

33. A square lattice consists of $2N$ sites, of which alternate sites are labeled A and B. An example with $N = 6$ is shown on the right. Now, N identical classical particles are distributed over these sites, such that each site can accommodate at most one particle.

A	B	A	B	A	B
B	A	B	A	B	A
A	B	A	B	A	B
B	A	B	A	B	A
A	B	A	B	A	B
B	A	B	A	B	A

The fraction of the total number N of particles occupying A sites is denoted α and the fraction occupying B sites is denoted β , so that $\alpha + \beta = 1$.

If α, β are fixed and $N \gg 1$, the entropy S of the system can be written

- (a) $S = -2Nk_B T (\alpha \ln \alpha + \beta \ln \beta)$ ✓
- (b) $S = 2Nk_B T (\alpha \ln \alpha + \beta \ln \beta)$
- (c) $S = -2Nk_B T (\alpha \ln \alpha - \beta \ln \beta)$
- (d) $S = 2Nk_B T (\alpha \ln \alpha - \beta \ln \beta)$



Explore Physics By Himanshu

Centre of Excellence | Physical Science

(CSIR-NET JRF, GATE, JEST, BARC, TIFR, IIT JAM, RPSC Asst. Professor)

34. A particle of mass m is placed in a one-dimensional harmonic oscillator potential

$$V(x) = \frac{1}{2}m\omega^2x^2$$

At $t = 0$, its wavefunction is $\psi(x)$. At $t = 2\pi/\omega$ its wavefunction will be

(a) $\psi(x)$

(b) $-\psi(x)$ ✓

(c) $-\pi\psi(x)$

(d) $\frac{2\pi}{\omega}\psi(x)$



Explore Physics By Himanshu

Centre of Excellence | Physical Science

(CSIR-NET JRF, GATE, JEST, BARC, TIFR, IIT JAM, RPSC Asst. Professor)

35. A spin-2 nucleus absorbs a spin- $\frac{1}{2}$ electron and is then observed to decay to a stable nucleus in two stages, recoiling against an emitted invisible particle in the first stage and against an emitted spin-1 photon in the second stage. If the stable nucleus is spinless, then the spin of the invisible particle is
- (a) $\frac{3}{2}$ or $\frac{5}{2}$ ✓
 - (b) $\frac{3}{2}$
 - (c) $\frac{1}{2}$ or $\frac{3}{2}$
 - (d) $\frac{1}{2}$

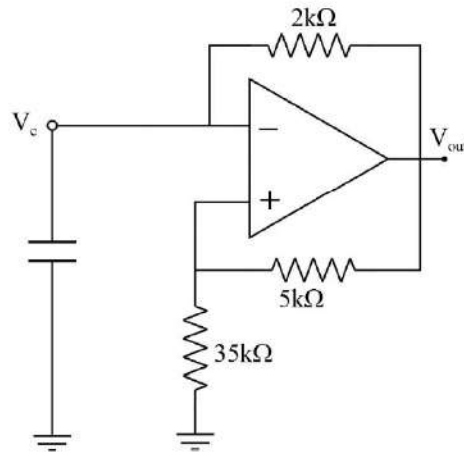


Explore Physics By Himanshu

Centre of Excellence | Physical Science

(CSIR-NET JRF, GATE, JEST, BARC, TIFR, IIT JAM, RPSC Asst. Professor)

36. The circuit sketched below is called a *relaxation oscillator*.



For the parameters indicated in the figure, the ratio of the maximum voltage at V_{out} to the maximum voltage at V_c is

- (a) $1/8$ ✓
- (b) $1/7$
- (c) $2/7$
- (d) $1/4$

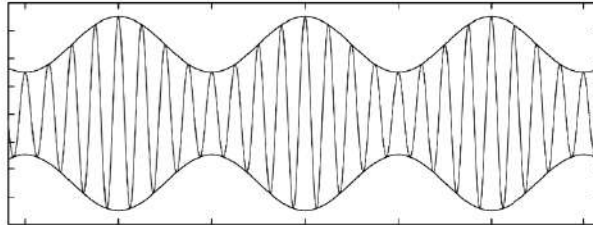


Explore Physics By Himanshu

Centre of Excellence | Physical Science

(CSIR-NET JRF, GATE, JEST, BARC, TIFR, IIT JAM, RPSC Asst. Professor)

37. The figure below shows a carrier frequency 4 kHz being amplitude-modulated by a sine wave signal.



In order to transmit the signal (without distortion) the minimum bandwidth needed would be

- (a) 8 kHz
- (b) 2 kHz ✓
- (c) 4 kHz
- (d) 6 kHz

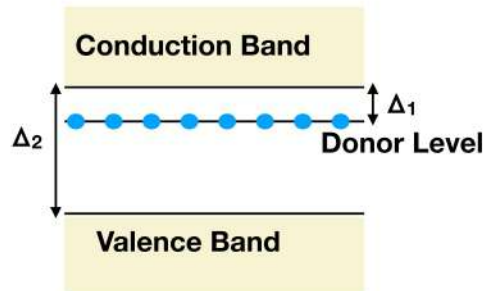


Explore Physics By Himanshu

Centre of Excellence | Physical Science

(CSIR-NET JRF, GATE, JEST, BARC, TIFR, IIT JAM, RPSC Asst. Professor)

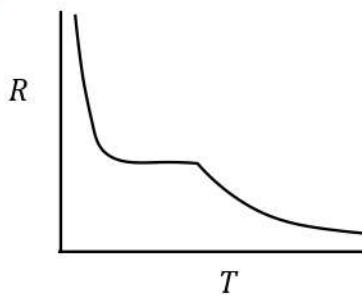
38. A semiconductor with donor impurities can be thought in terms of a filled valence band, a filled donor level and an empty valence band at $T = 0$, as shown in the figure below.



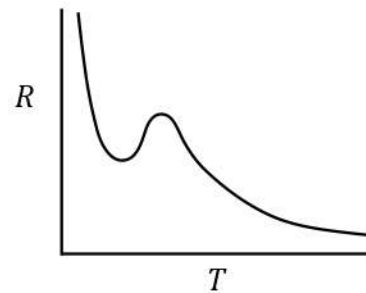
If the band gap between donor level and conduction band is Δ_1 and that between conduction and valence band is Δ_2 where $\Delta_2 \gg \Delta_1$, which of the following figures depict the qualitative features of the resistance (R)—vs—temperature (T) graph of the semi-conductor?

(Assume temperature-independent scattering rates and a flat density of states for the bands.)

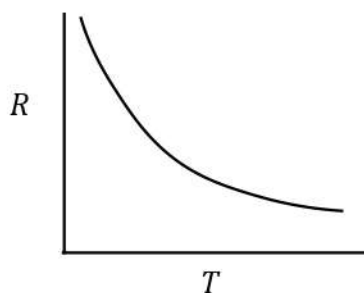
(a) ✓



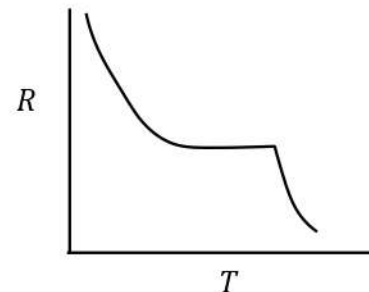
(b)



(c)



(d)





Explore Physics By Himanshu

Centre of Excellence | Physical Science

(CSIR-NET JRF, GATE, JEST, BARC, TIFR, IIT JAM, RPSC Asst. Professor)

39. Two atomic nuclei A and B have masses such that $m(B) = 2 m(A)$. in the laboratory frame, the nucleus B is kept stationary, while the nucleus A is given a kinetic energy 300 MeV and made to collide with B. It is found that the two nuclei fuse to form a compound nucleus C.

If the Q-value of the reaction is -30 MeV, the excitation energy of the compound nucleus can be estimated as

- (a) 81 MeV
- (b) 170 MeV ✓
- (c) 330 MeV
- (d) 270 MeV



Explore Physics By Himanshu

Centre of Excellence | Physical Science

(CSIR-NET JRF, GATE, JEST, BARC, TIFR, IIT JAM, RPSC Asst. Professor)

40. Which of the following decays is forbidden ?

(a) $\pi^0 \rightarrow \gamma + \gamma$

(b) $K^0 \rightarrow \pi^+ + \pi^- + \pi^0$

(c) $\mu^- \rightarrow e^- + \nu_e + \bar{\nu}_\mu$ ✓

(d) $n^0 \rightarrow p^+ + e^- + \bar{\nu}_e$